



PHS Community Gardens

Variety Guide: Fall 2024

Fall Reminders

Harden Off Seedlings: Seedlings typically come to you after weeks of being started in the ideal conditions of our greenhouses. “Hardening them off” is a step that can help prevent them from experiencing shock after transplanting that results in less vigor or even death. To harden off seedlings, simply let them adjust to the outdoors in a semi-sheltered spot for a couple of days. This helps ease them in to conditions like direct sunlight and wind, as well as fluctuations in temperature and water. Planting them on a cloudy day or an evening can also help them adjust slowly.

Harlequin Pressure: Plan to immediately cover your newly planted brassicas with light row cover or insect netting to prevent harlequin damage. Consider spraying seedlings with a preventative pest management application before planting and also survey your late summer brassicas to treat them for pest infestations. If growing at a small scale, we suggest hand collecting or using a dust buster to collect adult bugs off your plants and regularly checking the underside of leaves for their egg sacks. Squish both.





Variety Guide: Fall 2024

Alliums



Scallions: Evergreen Hardy White

- Days to maturity: 68
- A classic Italian variety with authentic flavor and appearance with large, dark green leaves about 3 inches long.
- Tall and relatively slow to bolt.

Herbs



Fennel: Preludio

- Days to maturity: 50 baby, 80 full-size
- Large, thick, rounded bulbs.
- Crisp and flavorful with a nice anise flavor.
- Suitable for late summer and early fall harvest in most areas.

Cole Crops



Bok Choy: Black Summer

- Days to maturity: 45
- F-1 Hybrid
- Broad, flat, light green petioles are topped with oval, dark green leaves.
- Best for full size, but also suitable for mini heads.
- Very slow bolting.



Broccoli: Emerald Crown

- Days to maturity: 59
- Large, well-domed heads with fine bead and short stem on a small plant. Best for crown cut.
- Resists purpling in cold weather, which makes Emerald Crown an excellent choice for fall crops.



Cabbage: Caraflex

- Days to maturity: 68
- Pointed mini cabbage.
- Extremely uniform, small heads with good wrapper leaves. Inner leaves are tender, crunchy, and have an excellent, sweet, mild cabbage flavor. Perfect for summer salads, slaws, or cooked dishes.



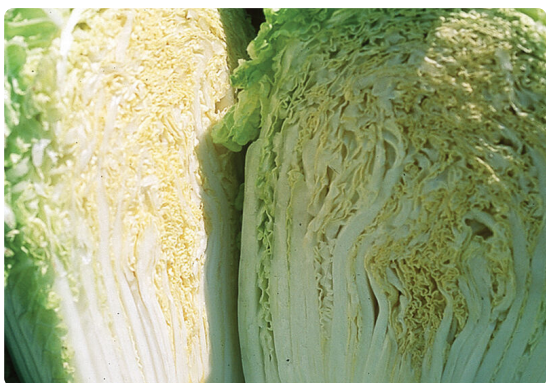
Cabbage: Alcosa

- Days to maturity: 72
- F-1 Hybrid
- Early savoyed cabbage.
- Round, 2–4 lb. deep blue-green, crinkled heads. Alcosa's well-packed, thin, yellow interior leaves quickly fill in, making it a smart choice for closely spaced plantings of mini cabbages.
- Flavor improves with cold weather. Best in cooked dishes. Intermediate resistance to downy mildew.



Cabbage: Primo Vantage

- Days to maturity: 73
- F-1 Hybrid
- Mid-early with great flavor.
- Heads avg. 4–4 1/2 lb., have a very short core, and are very juicy, tender, and sweet. Holds well in the field.



Napa Cabbage: Minuet

- Days to maturity: 48
- Best mini variety. Space 12" apart for high yields of upright, dense heads.
- 9" tall heads with dark green outer leaves and an attractive yellow interior.
- Light, sweet taste. Slow to bolt. High resistance to downy mildew. Tolerant to bottom rot and black speck.



Cauliflower: Synergy

- Days to maturity: 60
- Adaptable midseason variety.
- Large, sturdy plants produce big, well-domed heads.
- Performs exceptionally well in fall trials and is also suitable for spring production.



Cauliflower: PuntoVerde (Romanesco)

- Days to maturity: 78
- Johnny's most reliable all-season Romanesco.
- Attractive, high-quality heads for summer or fall harvest. Produces excellent fall crops.
- Outperforms typical Romanesco types under stressful weather conditions.



Collards: Flash

- Days to maturity: 50
- F-1 Hybrid
- Very slow to bolt. Flash offers repeated harvests of dark green, smooth leaves.
- Very high yielding.



Kale: Winterbor

- Days to maturity: 60
- F-1 Hybrid
- Standard green curly kale.
- Vigorous plants will continue growing to produce leaves for successive harvests as the lower leaves are harvested.



Kale: Black Magic

- Days to maturity: 65
- Lacinato or "dinosaur" type kale with long, narrow leaves for attractive and tall, straight bunches.



Kale: Redbor

- Days to maturity: 55
- Frilly deep purple-red leaves.
- Similar to Winterbor in everything but color. For garnishing and eating. Flavor, color, and curling are enhanced by cold weather.



Mustard: Green Wave

- Days to maturity: 21 baby/45 full size
- Spiciest mustard
- Bright green, broad leaves with a tightly scalloped margin and hot, mustardy flavor.



Mustard: Scarlet Frills

- Days to maturity: 21 baby/45 full size
- Very slow bolting, broadleaf mustard. Purple-tinted leaves with gently scalloped margins.
- Plant densely so leaves remain a proper size for baby leaf and petioles elongate for easy harvest.
- Milder flavor than Green Wave

Lettuce



Salanova Green Butterhead

- Days to maturity: 55
- Heads have a round base with open leaves.
- Delicate, buttery flavor.
- Great as a whole head or in salad mix.
- Bolt-resistant



Salanova Green Oakleaf

- Days to maturity: 55
- Fine-lobed salad-bowl-type oakleaf.
- Darker green, and more upright growth habit, than previous Green Oakleaf, making it less sensitive to bottom rot.
- Compact heads are great as a whole head or in salad mix.



Grazion

- Days to maturity: 52
- A slow-bolting green leaf with heavy, attractive heads and dark green leaves with wavy margins.
- Strong performer with excellent disease resistance.



Cherokee

- Days to maturity: 48
- Darkest red leaves and a long harvest window
- Very slow bolting with excellent tolerance to heat and bottom rot.
- High resistance to downy mildew.



Ruby Sky

- Days to maturity: 58
- Disease resistance makes this red leaf variety particularly well suited to late season production.
- Ruffled leaves are intense red at the tips and green at the inner base.



Green Forest

- Days to maturity: 56
- Early, tall, and dark green romaine.
- Slow-bolting and has smooth ribs so it packs and handles with little damage.
- Tolerant to tipburn.