



The **PHS Green Equity Initiative** is a bold plan for neighborhood focused environmental investment in Philadelphia. Basic livability, health and well-being are critical for the city's residents. The initiative proposes to significantly expand efforts to clean and green vacant land, increase tree planting, protect land and support community gardeners, and provide workforce training and development in green industry skills.

Investment in these types of efforts has been documented by the University of Pennsylvania, US Forest Service, and other academic partners to decrease gun violence, crime, and feelings of depression, and increase social connections and well-being, while creating more beautiful and livable neighborhoods.

With support from federal and state stimulus and infrastructure funds, PHS will help rectify environmental injustice in the city, while addressing acute quality of life challenges at the neighborhood level and ensuring a path for community empowerment.

Investing in Livability

Community Gardens

Invest in maintenance and safety for **75 gardens**; Secure permanent land tenure for **25 gardens**; Expand community garden support services for **150+ gardens** in Greater Philadelphia.



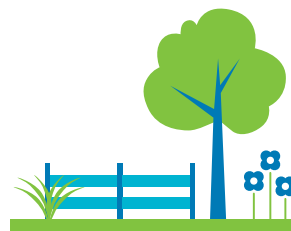
Tree Planting

Double number of annually planted trees citywide.



Vacant Land

Increase annual vacant lot stabilization by **4x**; **Double** total number of lots cleaned/greened in Philadelphia.



Workforce Training and Development

Create **100 jobs** with community organizations; Train and place **125 people** annually in green jobs.



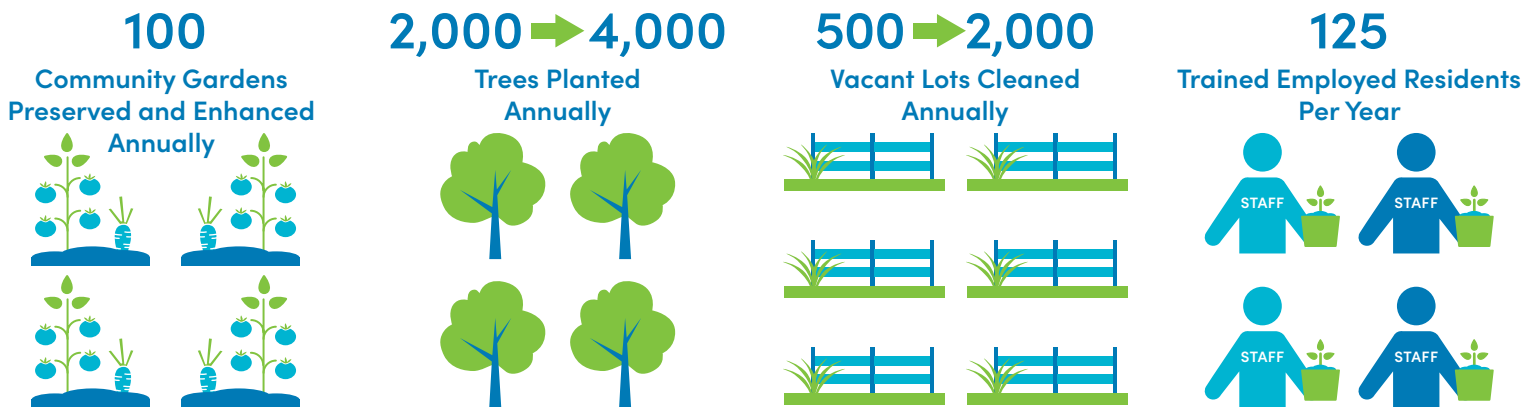


Green Equity Initiative Investment Areas



Funding of the Green Equity Initiative in Philadelphia will allow PHS to improve the health and well-being of those most impacted by historical environmental inequities. The long-lasting benefits of these investments will continue to pay future dividends for generations of Philadelphians.

Intended Future State



The PHS Green Equity Initiative provides a focused, action-oriented solution to fund equitable, neighborhood based environmental improvement activities that will provide long-lasting benefits for thousands of residents in Philadelphia – today and for generations to come.

PHS believes in the power of horticulture to make positive social and environmental change. As a community, we invest our time, passion, money, and gardens in our cause. For almost 200 years, PHS has used horticulture as the foundation of advancing the health and well-being of the Greater Philadelphia region. Our organization oversees an extensive portfolio of activities to advance four impact priorities.

PHS Impact Priorities:

- Create healthy living environments
- Increase access to fresh food
- Expand economic opportunity
- Build meaningful social connections

