



PHS Philadelphia Flower Show®

2022 In Full Bloom

Horticulture and Orchid Classes

8100 - 9785



Revised March 15, 2022



Table of Contents

GENERAL SHOW RULES - COMPETITIVE CLASSES	4
2022 PHS PHILADELPHIA FLOWER SHOW COMMITTEE	4
FLOWER SHOW STAFF	4
FLOWER SHOW RULES AND INFORMATION	5
STAGING AND MAINTENANCE OF ALL EXHIBITS	5
COMPETITIVE CLASSES ENTRIES	5
ADMISSION, INSTALLATION, AND TEAR-DOWN	5
INSTALLATION SCHEDULES	5
PASSES	6
REMOVAL OF EXHIBITS	6
SALES AND ADVERTISING MATERIAL	6
JUDGING AND AWARDS	6
SAFETY	7
NOMENCLATURE	7
PARKING AND ACCESS FOR EXHIBITORS, including exhibitors with disabilities	7
ACCESS FOR PERSONS WITH DISABILITIES during Show hours	7
DAMAGES	7
LIABILITY	7
AMENDMENTS	8
2022 HORTICULTURE AND ORCHID CLASSES RULES	9
WHAT’S NEW FOR 2022	9
IMPORTANT DATES FOR 2022	10
CHAIRS	10
ENTRY SCHEDULE	11
ENTRY PROCEDURES	12
HOW TO ENTER	12
ENTRY REGISTRATION AND ACKNOWLEDGMENT	12
ENTER ALL DAYS—Only available for classes designated “Eligible for EAD” in these rules.	13
HORTICULTURE AND ORCHID CLASSES RULES	14
HORTICULTURE AND ORCHID CLASSES DEFINITIONS	15
PLANT IDENTIFICATION	16
THE FLOWER SHOW BOTANICAL DATABASE (FSDB)	17
PLANT IDENTIFICATION CARDS	17
PLANT PREPARATION	19
POTS AND CONTAINERS	19
GROOMING BEFORE THE SHOW	20
TAKING ENTRIES TO THE SHOW	21
GROOMING AND WATERING AT THE SHOW	21

PASSING AND RECORDING	21
JUDGING	22
ENTRY AND AWARD POINTS	23
HORTICULTURE AND ORCHID CLASSES	23
SUCCULENTS	24
BULBS	24
INDOOR DELIGHTS	24
HARDY PLANTS	26
HERBS AND PELARGONIUMS	26
BOG PLANTS	27
GARDENS IN CONTAINERS; PLANTS ON FORMS	27
HANGING CONTAINERS	28
GRAND OLD PLANTS	28
NEW FOR 2022	29
ORCHID CLASSES	30
ORCHIDS	30
NOVICE ORCHIDS	31
HORTICULTURE AND ORCHID CLASSES AWARDS	32
SWEEPSTAKES AWARDS	33

GENERAL SHOW RULES - COMPETITIVE CLASSES

2022 PHS PHILADELPHIA FLOWER SHOW COMMITTEE

Helen Horstmann, Chair

Matt Rader, President

FLOWER SHOW STAFF

Executive Vice President	Tamela Viera
Vice President & Chief, Shows & Events	Sam Lemheney
Executive Assistant, Shows & Events	Michelle Dean
Vice President, Business Development	Jimmy Owens
Vice President, Marketing and Communications	Erin Dunkel
Director, Activation Activities	Rebecca Schuchart
Director, Individual Giving & Membership	David Chrystal
Director of Design	Seth Pearsoll
Director, Event Production and Operations	Nick Gerace
Manager, Competitive Classes	Jenna Celius
Marketplace Manager	Meredith Colberg Wysowski
Manager of Exhibitor Relations	Hannah Mullen
Events Operations Specialist	Mairin Petrone
Data Specialist	Elsa Efran
Lead Designer	Laura Butera
Design Associate	Anne Vallery
Program Specialist, Activation Activities	Emily O'Malley
Volunteer and Exhibitor Data Specialist	Rachel Cieri
Volunteer Services Support	Ellen Ginda
Coordinator, Premier Party	Ellen Wheeler

PHS Phone215-988-8800

PHS Mission

We connect people with horticulture, and together create beautiful, healthy and sustainable communities.

Proceeds from the PHS Philadelphia Flower Show

benefit the Pennsylvania Horticultural Society and its initiatives, including the PHS City Harvest, which provides locally grown, fresh produce for underserved families.

PRINTED COPIES OF EXHIBITOR'S GUIDE

*If you have downloaded this Exhibitor's Guide and wish to receive a printed copy, please send your name and address (print clearly, please) to Exhibitor's Guide, Shows Department, The Pennsylvania Horticultural Society, 100 N. 20th St., 5th Floor, Philadelphia, PA 19103-1495, or e-mail compclasses@pennhort.org. This e-mail address is for **exhibitor requests only**, not for general information about the Show.*

For general Show information, visit the Flower Show website (phsonline.org) or call PHS (215-988-8800).

FLOWER SHOW RULES AND INFORMATION

Specific classes have additional rules. See individual sections.

STAGING AND MAINTENANCE OF ALL EXHIBITS

1. **All entries must include fresh or dried plant material; rooted plants must predominate, and the emphasis should be on color.** All exhibits must be kept in Show condition. Plant material must be kept fresh. Unsightly or wilted plant material must be replaced. No artificial plant material is permitted in any exhibit.
2. **No live animals** are permitted in any Flower Show exhibit without prior approval. Requests must be made by March 31, 2022. **No taxidermy (including feathers) is permitted in any Flower Show exhibit.**
3. Show Management has the right to refuse any exhibit, for any reason whatsoever, that is not in the best interest of the Flower Show and shall have the power at all times to remove any exhibit that is not properly maintained or that, in their opinion, is a detriment to the Show.
4. Competitive Classes maintenance must be completed between the hours of 6:30 am and 8 am on all days. Doors open for maintenance at 6:00 am on all days.
5. Pool and fountain liners must be constructed of material of sufficient strength to prevent seepage.

COMPETITIVE CLASSES ENTRIES

6. Entries will be accepted as received, and classes will be closed when filled. All entries will be acknowledged. Classes 160, 161, 162, 163, 164, 165, 166, 167, and 168 were announced before publication and may be filled; contact compclasses@pennhort.org about availability in these classes. Most Competitive Classes in the PHS Philadelphia Flower Show are open to everyone—amateur or professional; however, Photography classes are limited to amateurs. Entries may be made by individuals or groups (e.g., garden clubs, non-profit organizations); however, **entries may not be entered under a commercial or business name.**
7. Entry forms can be found in each individual section or linked on the Competitive Classes page of the PHS Philadelphia Flower Show website (phsonline.org). Please note that there are separate online entry forms for Arrangement, Horticulture, Pressed Plant Material, Jewelry, and Photography Classes.
8. On each entry day, each exhibit must be passed by the Passing Committee before the exhibitor leaves the Show grounds.

ADMISSION, INSTALLATION, AND TEAR-DOWN

9. During installation and tear-down, proper credentials supplied by Show staff must be worn at all times. **No one under age 16 is allowed on the Show grounds during setup unless they are exhibitors; they must be accompanied by a parent, guardian, teacher, or group leader. Reminder: No one under age 16 is allowed on the Show grounds during tear-down. No exceptions.**

INSTALLATION SCHEDULES

10. Competitive Classes exhibitors should refer to the times listed for their specific sections (see class rules mailed to exhibitors).

PASSES

11. Exhibitor passes are limited and will be allocated by the Show Management. These tickets are to be surrendered upon entering FDR Park.

REMOVAL OF EXHIBITS

12. Nothing may be removed from exhibits during the Show except with the approval of Show Management or at specific times stipulated in certain classes.
13. No boxes or other removal containers are permitted in the Show grounds until after the public has left the Show grounds. **Nothing may be dismantled until the removal announcement has been made, between 6:30 pm and 7 pm**
14. All Competitive Classes are to be dismantled on Sunday, June 19. Removal information will be distributed prior to the Show by class chairs.
15. Competitive Class exhibitors are responsible for guarding their exhibits on Sunday, June 19, from 5:00 pm until removal begins.
16. All exhibitors and helpers on the Show grounds **must** wear appropriate removal credentials supplied by Show staff during the dismantling period. Credentials may be obtained from the class chairs or Show Management.
17. Exhibitors are responsible for the complete removal of their exhibits, including trees, shrubs, rocks, peat moss, and other bulky refuse. Exhibitors who fail to comply will be billed for the cost of the removal.
18. **No plant material may be sold or given away at closing time.**

SALES AND ADVERTISING MATERIAL

19. No sales of any kind will be permitted at FDR Park after the close of the Show.
20. No advertising, business cards, etc., will be permitted in any Competitive Class exhibit.

JUDGING AND AWARDS

21. No one other than those authorized by Show Management will be permitted in the area of the Show where judging is in progress, and no one may discuss exhibits with the judges.
22. Plants in Major Exhibits are not eligible for Competitive Classes competition.
23. In all Competitive Classes, if merited, ribbons will be awarded as follows: one First (blue), one or more Seconds (red), one or more Thirds (yellow), and one or more Honorable Mentions (white). **Exception:** Par judging will be allowed in the Grand Old Plant Classes in the PHS Hamilton Horticult. Class Commendations are awarded at the discretion of the judges and may only be awarded if every exhibit has received an award ribbon; a commendation ribbon (turquoise) will be placed on every exhibit in the class. Decisions of the judges are final. Entries designated "For Exhibition Only" will not be judged and will not receive comments, point scores, or sweepstakes points.

SAFETY

24. In compliance with Philadelphia Fire Prevention Code requirements, all cut trees and combustible materials in displays (including background and drapes) **MUST** be treated with an approved flame-retardant chemical in accordance with National Fire Protection Association Standard 701. Any chemical you use must have that number on its label.

Note: Fabric must be **dunked** in fire retardant; spraying will not suffice. **Exhibitors will be required to sign a form indicating compliance.**

25. Exhibitors must guard against leaks and over-watering.
26. **No one under age 16 is allowed on the Show grounds during set-up unless they are exhibitors; they must be accompanied by a parent, guardian, teacher, or group leader. Reminder: No one under age 16 is allowed on the Show grounds during tear-down. No exceptions.**

NOMENCLATURE

27. All plants must be correctly labeled. Points are given by judges for legibility and unobtrusiveness of labels. Primary references are the PHS Philadelphia Flower Show Database (register.theflowershow.com/Botanicalview.aspx), RHS Plant Finder (<http://apps.rhs.org.uk/horticulturaldatabase/>), and Plants of the World (plantsoftheworldonline.org/). The PHS Philadelphia Flower Show Database lists over 20,000 plants used in previous Shows.
28. Wild-collected plants of endangered and threatened species are strictly forbidden in any PHS Philadelphia Flower Show exhibit. It is the responsibility of the exhibitor to make sure these plants are not on exhibit. Endangered or threatened species are designated on *the United States List of Endangered and Threatened Wildlife and Plants*. A current list is available on the Internet (plants.usda.gov/threat.html).

PARKING AND ACCESS FOR EXHIBITORS, including exhibitors with disabilities

29. Information will be provided to exhibitors after entry is accepted.

ACCESS FOR PERSONS WITH DISABILITIES during Show hours

30. Information will be available on the website (phsonline.org) closer to Show dates and provided to exhibitors after entry is accepted. Philadelphia's Department of Licenses and Inspections will enforce the rule of allocated parking for persons with disabilities at all lots.

DAMAGES

31. Exhibitors who damage any part of FDR Park will be charged for repairs.

LIABILITY

32. Although The Pennsylvania Horticultural Society (PHS) will exercise due caution in safeguarding exhibits, it cannot assume responsibility for injury or loss. Valuables used in exhibits should be insured by exhibitors.
33. **LIMITATION OF MANAGEMENT'S LIABILITY.** Exhibitor will make no claim against PHS, The City of Philadelphia, its officers, employees, and agents, and agrees that Management shall not be liable for any injury or loss or damage to exhibitor, or to its employees, agents, property, and

business caused by: (a) acts or omissions of any contractors (or employees or agents of such contractors) retained by Management to perform services in connection with the Show, or (b) fire, theft, destruction, or any occurrence not resulting from intentional misconduct on the part of Management (or its employees acting in the scope of employment), whether occurring during Show hours or the periods designated for installation, maintenance, and removal of exhibits and notwithstanding any negligence of Management connected therewith.

34. **INDEMNIFICATION FOR EXHIBITOR'S ACTS.** Exhibitor agrees to indemnify and save harmless PHS, The City of Philadelphia, its officers, employees, and agents, and each of them, from any and all claims of liability made by anyone for any loss, injury, or damage to person or property, including death, arising out of the conduct of exhibitor or its employees or agents, and agrees to defend PHS, The City of Philadelphia, its officers, employees, and agents against any such claims or liabilities and to reimburse them for all expenses, including costs of settlement, incurred in connection therewith.
35. By entering an exhibit in the PHS Philadelphia Flower Show, the exhibitor agrees to abide by and be governed by the conditions set forth in the foregoing rules.

AMENDMENTS

36. The PHS Management shall have full power in the interpretation and enforcement of all rules contained herein, and the power to make such amendments thereto, and such further rules and regulations as they shall consider necessary for the proper conduct of the Show.
37. **COVID ACKNOWLEDGEMENT.** By entering an exhibit in the PHS Philadelphia Flower Show, the exhibitor acknowledges that the novel coronavirus and the disease it causes (hereafter "COVID-19") has been declared a worldwide pandemic and that cases of COVID-19 have been confirmed throughout the United States, including thousands of cases in Pennsylvania. Exhibitor understands that COVID-19 is extremely contagious and, while the state of medical knowledge is evolving, it is believed that COVID-19 spreads through person-to-person contact, by contact with contaminated surfaces and objects, and through the air. As a result, federal, state, and local governments and health agencies recommend social distancing and have prohibited gathering of groups of people in many locations. Exhibitor understands that there is no known treatment or cure for COVID-19 and that evidence has shown that COVID-19 can cause serious and potentially life-threatening illness and even death. Exhibitor understands that as the Flower Show will not be conducted on PHS-owned property, PHS will have limited control over preventative measures in place to reduce the spread of COVID-19.

2022 HORTICULTURE AND ORCHID CLASSES RULES

WHAT'S NEW FOR 2022

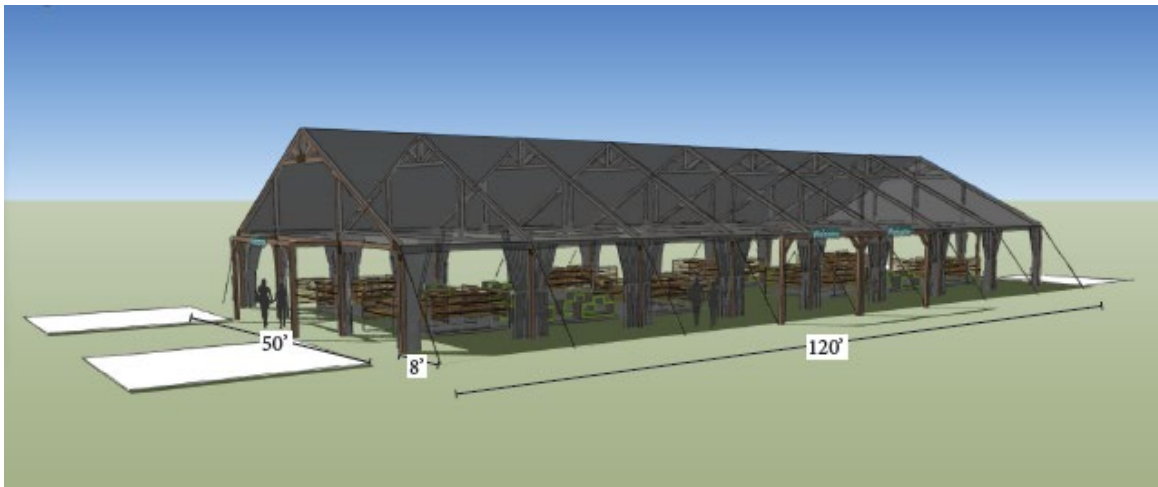
The 2022 Horticult court will be in an open pavilion with vinyl sides that will be closed at night and in the event of inclement weather. Staging will be the same as at previous Shows.

There will be two Horticult court judging days—Friday, June 10, and Wednesday, June 15.

All plants must be pre-registered by Saturday, April 30. No walk-in entries (“post-entries”) will be permitted.

Access to the site for plant drop-off is strictly limited within registration times. Exhibitors are encouraged to arrive early and enter all plants on Thursday for the first judging day. Wednesday entries should be limited to light grooming needs.

Artist's rendition—the tent design is subject to change



IMPORTANT DATES FOR 2022

Tuesday, March 15—FSDB opens for online entry registration.

Saturday, April 30—Entry deadline. For 2022, **all** plants must be pre-registered. No walk-in (“post-entries”) will be permitted.

Saturday, April 30—Deadline to contact Horticulture Committee members re: accessories, etc.

Friday, May 20—Last date to add or change plant names for entries.

Thursday, June 9—First entry day for Friday judging.

Friday, June 10—Entry day for Friday judging.

Wednesday, June 15—Entry day for Wednesday judging

We encourage you to use this date only for re-grooming and re-entering Friday plants, since time for new entries is limited.

Sunday, June 19—Removal of entries begins at 6:30 pm

CHAIRS

Horticulture Committee

Co-Chair	Sue Slim	sslim760@comcast.net
Co-Chair	Thomas Hawkins	susmay100@gmail.com
Vice-Chair	Scheraz Mahushukeen	mahscheri@yahoo.com
Vice-Chair	Brooke McInnes	brookemci@aol.com
Advisor	Nancy D. Baxter	baxboxndb@gmail.com
Advisor	Brenda S. Krammes	Brendakrammes@yahoo.com
Advisor	Middy I. Dorrance	midtim@comcast.net
Advisor	Jessica Slater	slater.jessie@gmail.com

Orchid Committee

Co-Chair	Carrie Buchman	cbuchman@tncb.net
Vice-Chair	MaryAnn Denver	mdenver6@yahoo.com
Vice-Chair	Robert Thuener	rkthuener@msn.com

ENTRY SCHEDULE

Please note: For 2022, all Horticulture and Orchid entries must be pre-registered by Saturday, April 30.

For 2022, there will be no walk-ins (“post-entries”) at the Show—that is, plants that have not been pre-registered. Do not take to the Show any non-registered plants unless they are *substitutes* for plants you have already pre-registered in a class (e.g., a flowering *Begonia* to replace a pre-registered *Begonia* that did not flower in time).

There are two entry/judging cycles during the 2022 Flower Show.

Judging Cycle	Entered, passed, recorded, staged	Remove and/or re-enter
Day 1 FRIDAY CLASSES (8100-8785)	Thursday, June 9, 1 pm - 5:30 pm Friday, June 10, 7 - 10 am	<p>Classes entered on these two days will be judged on Friday, June 10.</p> <p>Entries in classes 8100-8785 must be re-entered or removed on Wednesday, June 15 between 6:30 and 7 am (except Enter All Days [EAD] entries).</p> <p>Hint: Exhibitors are strongly encouraged to enter plants early on Thursday. Vehicle access to the site may be limited at times. Plants not onsite during entry times will not be displayed in the Show.</p>
Day 2 WEDNESDAY CLASSES (9100-9785)	Wednesday, June 15, 6:30 - 7:30 am	<p>Any Friday 8100-8785 non-EAD exhibits being entered in the Wednesday (9100-9785) classes must be re-entered, re-groomed, and re-passed from 6:30-7:30 am Vehicle access to the site may be limited during this time. Plants not onsite during entry times will not be displayed in the Show.</p> <p>EAD entries are automatically entered in the Wednesday classes (no grooming; no additional passing). You do not need to be present on Wednesday to deal with your EAD entries.</p> <p>Because of the short amount of time available for entries on Wednesday, we encourage you to limit new entries and mainly re-groom and re-enter any Friday entries that are were not eligible for EAD.</p> <p>Entries must be removed Sunday, June 19, after the public has left the Show site (approximately 6:30 pm) All plants must be removed by 8 pm</p>

ENTRY PROCEDURES

The Horticulture and Orchid Classes Rules and Entry Procedures sections provide the answers to most questions about exhibiting. If you require further support, please contact one of the members of the Horticulture or Orchid Committees.

HOW TO ENTER

- Please note: **All entries for the 2022 Show must be pre-registered.** There are no limits on the number of entries exhibitors can make (within class limits). Exhibitors should read these rules carefully to determine which classes to enter. Careful attention to class regulations and requirements (e.g., pot sizes) is important.
- **New for 2022: No entries that have not been pre-registered will be accepted on entry days except substitutions for pre-registered plants. No walk-in entries (“post-entries”) will be accepted.**
- There is no penalty if exhibitors do not exhibit all the plants that they have pre-registered.
- The preferred way to pre-enter is to use FSDB (Flower Show Database), the online registration system for Horticulture entries (register.theflowershow.com). The online system will be available for entries from March 15 through April 30. Plant names can be changed or added until May 20. Exhibitors can check their accounts beginning March 15.
- Email fsguide@pennhort.org or call 215-988-8822 to request a paper entry form or for details on how to submit entries in another format.

ENTRY REGISTRATION AND ACKNOWLEDGMENT

- Pre-registration forms (online or on paper) must be **received** at PHS by April 30 (not postmarked April 30).
- You can check the status of your pre-entries entered via FSDB on the My Entries tab. If the Status is “To Be Entered,” you must click on the Checkout button to complete the process. “Submitted” indicates that the plant name needs to be verified by the Nomenclature volunteers; once that happens, or if the plant name is already in the system, the entry will be marked “Accepted.” Click on “Save to pdf” above the Status column to create a printable entry list.
- All exhibitors who have pre-registered will be mailed a packet in late May containing credentials for admittance to the Show at FDR Park, parking information, site access for plant drop off, a preliminary map, and other pertinent information.
- Make every effort to correctly identify your plants. Provide two 4"×6" cards for each entry (see pages 17-18).

ENTER ALL DAYS—Only available for classes designated “Eligible for EAD” in these rules.

- EAD-eligible classes are classes in which entries should not need grooming for the entire run of the Show. For instance, most succulent classes are eligible for EAD, whereas classes for blooming plants are not, since the plants will likely need grooming before being re-entered for the second judging cycle.
- Enter All Days (EAD) allows exhibitors to enter plants on the first judging day and not have to re-enter them on the second judging day. Plants entered in the traditional way (day by day) are also welcome in EAD classes.
- EAD plants will be judged on each judging day. Any ribbons and special awards during the week will be collected by the Committee and given to exhibitors at teardown.
- **Only plants that have been pre-registered (online or on paper) in EAD classes can take part in EAD.** Plants that have been pre-entered as EAD are identified with an asterisk after the PHS ID number on the entry list as well as on the PHS card displayed after judging.
- **Reminder:** All EAD plants must be entered in the Show on the **first** entry day (Thursday, June 9, and Friday, June 10 are considered the first entry day) in the EAD class in which they were pre-entered **and must remain in the Show for the second judging day, Wednesday, June 15.**
- An EAD plant cannot be replaced with another plant (including a substitute) after the first entry day.
- Once a plant has been entered using EAD, it cannot be moved into another class as an EAD. If it is removed from the EAD class to be entered in a new class, it will forfeit its pre-entry point. Because of limited entry hours, this is strongly discouraged.
- **Three 4"×6" plant identification cards are required for each EAD entry. The 4"×6" cards must contain both class numbers (8xxx, 9xxx) listed one under another as well as both PHS ID numbers** (see page 18 for an example).
- Detailed instructions about the EAD process will be part of the entry process if you enter online. Instruction reminders will be mailed with your credential packets in May and will also be available closer to Show time at phsonline.org.
- **Remember: Entering a plant on both entry days does not automatically make it an EAD entry. If the plant is not in an EAD class or if there is no asterisk (*) after the PHS ID on your FSDB entry list, the plant is not an EAD entry, and it must be re-groomed, re-entered, and re-passed on Wednesday.**

HORTICULTURE AND ORCHID CLASSES RULES

- Anyone can enter the PHS Philadelphia Flower Show. You do not have to be a member of any garden club or horticultural organization (including PHS). However, there are many benefits of PHS membership—see phsonline.org for more information about membership benefits.
- Plants entered in the Flower Show must be of Show quality in form and condition, free of pests and diseases.
- FSDB opens for online pre-registration of entries on March 15, 2022.
- All entries (online or on paper) must be **received** at PHS by April 30, 2022 (not postmarked April 30).
- For all classes, you may make up to **three** entries per class unless otherwise specified. However, they must be of **different** species, varieties, or cultivars. (Exception: *Clivia* classes 8230 and 9230, in which you may make up to three entries of the same species per class.)
- For most classes, only one plant per pot is permitted. Exceptions: Plants with naturally occurring pups, attached offsets, etc.; terrariums, container gardens, etc. For bulb classes, there is no limit to the number of bulbs per pot.
- You may **substitute** another plant for one that has been pre-entered in a class, if it fits the requirements of the class.
- Exhibitors or their representatives must stay with all entries until they are passed and recorded.
- Every plant must be properly identified.
- Write the exhibitor's name with indelible ink on the bottom of each pot; a cell-phone number is helpful.
- Wild-collected plants of endangered and threatened species are forbidden in any PHS Philadelphia Flower Show exhibit. It is the responsibility of the exhibitor to make sure these plants are not on exhibit.
- Orchids may only be entered in the Orchid Classes. No orchids are permitted in any Horticulture classes (e.g., no orchids in terrariums, Wardian-style Cases, or plants on forms).
- No bonsai are permitted.
- No water or electrical hookups are permitted for any exhibits.
- Accessories are **not** permitted unless they are specifically allowed in the class description. If in doubt, contact a member of the Horticulture Committee by April 30. For a definition of accessories, see next section.
- Food items are **not** permitted as accessories.

- **Plants may not be removed before the designated removal dates or times.** Neither PHS nor the Committee can be responsible for plants left beyond removal times (between 6:30 - 7:30 am on Wednesday, June 15, and on closing day Sunday, June 19, between approximately 6:30 pm to 8 pm).

HORTICULTURE AND ORCHID CLASSES DEFINITIONS

- **Accessories:** Artificial elements such as ceramic frogs or miniature tables.
- **Beginner's Luck classes:** Open only to first-time exhibitors in the Horticulture classes.
- **Enter All Days (EAD):** EAD entries may only be made in classes designated "Eligible for EAD" in the *Exhibitor's Guide*.
- **Flowering** plants must be in bloom. **Non-flowering** plants must not be in bloom.
- **Foliage plants:** Plants exhibited primarily for foliage will be classified as such, although a few flowers or buds on non-orchid plants are acceptable. Foliage orchids may not be in flower or bud.
- **Formal vs. informal:** Plants pruned and/or trained, altering their natural form or shape, are considered formal. All other plants, although selectively pruned for grooming purposes, are considered informal. No trellis or framework is allowed in an informal class; a single stake is allowed.
- **Hardy:** Plants that can reliably survive outdoor winter conditions in the Greater Philadelphia Region are considered hardy. Entries need not have been grown outdoors.
- **Novice Classes:** Novice Classes are only open to exhibitors who have not won a blue ribbon awarded by the PHS Philadelphia Flower Show prior to 2022 within designated divisions of the Show. If an exhibitor wins a blue ribbon in a Novice Class in 2022, the exhibitor may remain in subsequent Novice Classes within that designated division throughout the remainder of the 2022 Show. Designated divisions include Bulbs, Orchids, and General Horticulture (everything except Bulbs and Orchids).
- **Plants grown in house:** Plants that are grown in exhibitor's home, not in a greenhouse. (Greenhouse refers to an independent structure with its own climate control.)
- **Rock garden plants:** Rock garden plants are small-scale plants that thrive in well-drained stony or sandy soil; in the wild they are typically found in the mountains or other rocky habitats.
- **Show quality:** Plants should have a vigorous, healthy appearance (including foliage, flowers, or fruit) and a form characteristic of a well-grown plant. See also "What Do the Judges Look For."
- **For shrubs:** **Dwarf**=grows less than 6" per year; **Miniature**=grows less than 2" per year.
- **Terrariums:** Glass or clear plastic containers for displaying plants, **especially plants that need high humidity**. Terrariums must have **clear, rigid** covers; plastic wrap is not permitted.

- **Wardian-style Cases:** Glass enclosures employing a metal or wooden frame; they should resemble greenhouses or conservatories and should include roofs. **Wardian-style cases should display plants that need high humidity.**

PLANT IDENTIFICATION

- Please make every effort to submit correct botanical names on your entry forms so that they can be verified in advance by the Competitive Classes Nomenclature Committee. All plants must be correctly named. Primary references are the PHS Philadelphia Flower Show Database (register.theflowershow.com/Botanicalview.aspx), RHS (rhs.org.uk/plants/search-form), and Plants of the World (plantsoftheworldonline.org). References for orchid names are RHS (apps.rhs.org.uk/horticulturaldatabase/orchidregister/orchidregister.asp) and Kew (wcsp.science.kew.org). *The Timber Press Guide to Succulent Plants of the World: A Comprehensive Reference to more than 2000 Species* (Fred Dortort, 2011) is used to define if a plant is a succulent or not. A reference copy is available in the PHS McLean Library.

Do not guess. If you are unsure about a botanical name, it is permissible to use sp. for a species and cv. for a cultivar (e.g., *Begonia* sp.).

For orchids, spell out the words **species** and **hybrid** (e.g., *Phalaenopsis* hybrid). Orchid names are not required when pre-registering. Plant names may be updated/added to FSDB entries up through May 20.

- If you are entering on the FSDB entry screen, either select a plant name from your My Plants list or start typing the name of the plant in the botanical-name box. If the plant is in the database, it will appear on a drop-down list; click on the name to select it. Tip: Instead of beginning to type at the beginning of the plant name, type the second name or cultivar name—for instance, instead of typing *Begonia* ‘River Nile’, just type Nile.
- If you see instructions to use a different name (e.g., PLECTRANTHUS SCUTELLARIOIDES ‘VULCAN’ USE: COLEUS SCUTELLARIOIDES ‘VULCAN’), go to the correct name (COLEUS, etc.) and select it for your entry.
- If the plant name is not in the database, it will appear in your entry list as a proposed name in **red**, followed by an asterisk (*), and the entry status will say “Submitted.” The Nomenclature Committee will attempt to verify it prior to the Show.
- **Any corrections for proposed names will be updated on your My Entries list and will be printed on the PHS cards waiting for your entries at the Show.** (If you enter on a paper form, an updated entry list will be included in your credentials packet.) **Please note:** Verification of a botanical name does not ensure that a plant is correctly identified or is entered in the appropriate class.
- **You are allowed (and encouraged) to add or change the names of plants being entered via FSDB until midnight on Friday, May 20).** This will reduce errors and the number of PHS cards to be retyped on entry days. Note: You may not add or move **entries** in FSDB; you are only permitted to update the **plant names**.

- If you are entering a class that permits two or more different plants per entry (e.g., bulb garden, miniature rock garden, terrarium, plants on a form), you must submit a preliminary plant list—online in FSDB, by e-mail to fsdb@pennhort.org, or with your paper entry form by Friday, May 20. The earlier you submit this list, the sooner it can be checked by the Nomenclature Committee.

On the **preliminary** list, it is advisable to include all of the plants that you **might** enter, even if you do not actually include all of those plants as part of your entry. If you are entering via FSDB, you should check your plant list prior to the Show to see if proposed names (in red, followed by an asterisk) have been corrected. If you enter on a paper form, your corrected plant list will be sent in your credentials packet. **Please be sure that your final list has the correct names.**

At the Show, you must provide two copies of a final, corrected, legible, numbered plant list in waterproof ink on a 4"×6" index card along with the 4"×6" cards required for each entry. You must also provide a diagram of your entry no larger than 8½ x 11", with the plants numbered to correspond to your final corrected plant list.

THE FLOWER SHOW BOTANICAL DATABASE (FSDB)

- The PHS Philadelphia Flower Show Botanical Database is the system for record-keeping at the PHS Philadelphia Flower Show, maintaining exhibitor accounts and records of current and past entries and awards.
- FSDB also lists the botanical names of over 20,000 plants that have been entered in the Flower Show over the years. **The Database is updated continuously.** We urge you to use this Database to check the names of plants before you submit them on a plant list or registration form. In many cases, the Database will lead you to photographs or descriptions that will assist you in properly identifying a plant.
- You can find a link to the database on the Competitive Classes page of the Flower Show website phsonline.org or register.theflowershow.com/Botanicalview.aspx.
- For many of the plants on the list, you will see links to Google Images or Google Search. Those links will take you to pictures of the plants or to more information about them (often including where to buy them). The Pennsylvania Horticultural Society takes no responsibility for the accuracy of this information.
- Do not use any variants of botanical names that you may find using Google Images or Google Search. They may be incorrect or out of date. Use the spelling and punctuation guidelines in FSDB.

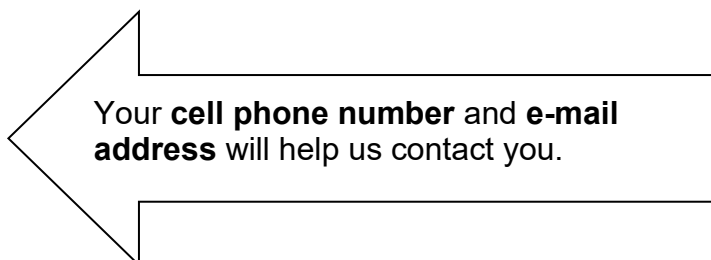
PLANT IDENTIFICATION CARDS

- On **each entry day**, each non-EAD entry **must** be accompanied by two white 4"×6" cards. **EAD entries need three cards on the first entry day. Note:** If your entry consists of more than one pot, you must bring **two cards for each plant/pot in the collection.**
- Please use waterproof black ink (e.g., Sharpie).

- On one side of each card, clearly print your name, **cell phone number**, e-mail address, and garden club or horticultural organization (if applicable). **Note:** You may use pre-printed labels or rubber stamps if they are easy to read and the form of your name is consistent.

FRONT

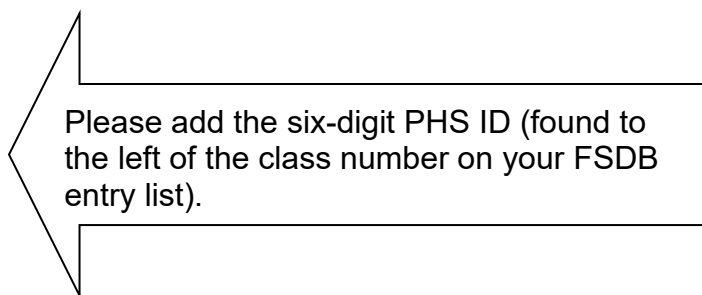
YOUR NAME
CELL PHONE #
E-MAIL ADDRESS
CLUB/ORGANIZATION



On the other side of each card, print **the class number and botanical name in LARGE BLOCK LETTERS**. This is the card that the judges see, so legibility and accuracy of nomenclature is to your advantage. **Be sure to incorporate any nomenclature corrections—including spelling—made by the Nomenclature Committee.** Please note: Corrections or verifications should not be construed as an acknowledgment that your plants are in the appropriate classes.

BACK

CLASS 8205
AMORPHOPHALLUS KONJAC
8-10001



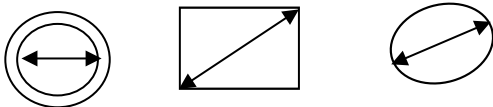
For each EAD entry, prepare three 4"×6" cards. Please put both class numbers at the top left of the card and both PHS ID numbers at the bottom right. (The asterisk after the PHS ID indicates EAD status.) **Note:** PHS ID numbers might not be in consecutive order). Please check carefully before preparing your cards.

CLASS 8205
CLASS 9205
AMORPHOPHALLUS KONJAC
8-10001*
9-10003*

PLANT PREPARATION

POTS AND CONTAINERS

- **Pot size** for traditional clay or plastic pots refers to the largest **inside** measurement at the top. Rectangular containers will be measured on the diagonal. Oval containers will be measured at their widest diameter.



- We recognize that obtaining pots of the exact measurements specified for a class can be challenging—you may have metric pots, or handmade pots, or pots from the past, when sizes may have been different. For that reason, we permit a $\frac{1}{2}$ " leeway in size—for example, $7\frac{1}{2}$ " and $8\frac{1}{2}$ " will be accepted for an 8" pot. For all pots under 4", a leeway of only $\frac{1}{4}$ " will be allowed. No further leeway can be given.
- Containers should be clean, unobtrusive, and compatible with the exhibit.
- **Strongly recommended**—Simple unglazed, unpainted terra-cotta, brown, or black **clay** pots or other **clay** pots. Orchid exhibits may use clay, dark green or black plastic, natural fiber, or ceramic containers that are not highly decorated.
- **Acceptable (and recommended for heavy or hard-to-move plants)**—Terra-cotta-colored plastic pots, dark green **rigid** plastic pots, metal pots or tubs, wooden tubs.
- **Not acceptable**—White, brightly colored, or highly glazed ceramic pots, fiber pots (except orchids), ridged containers (including black or green nursery "production pots").
- **If in doubt about the appropriateness or conformity of a container, please contact a member of the Horticulture Committee by May 20.**
- **Pots must be labeled! Write your name on the bottom of each pot with a waterproof pen (e.g., Sharpie).**
- Remember: Plants will be moved during staging. All containers must be strong enough to withstand being moved. Pots must be stable (not easily tipped over). If your plant is in a delicate or particularly awkward pot, we suggest that you repot it before bringing it to the Show.
- Hanging containers are allowed in classes 8600-8615 and 9600-9615 only. No half-baskets or ornamental hangers are allowed. Please be certain that the containers, hangers, chains, hooks, etc., are strong enough to withstand being moved during staging.

- **Top dressing** is limited to natural material in brown, black, gray, or tan (such as very small natural pebbles used for aquariums) or small wood chips/bark; no bright colors (including white) are permitted. Underplanting with additional plant material is not permitted. **Exceptions will be made at the discretion of the Horticulture Chairs for inconspicuous naturally occurring mosses that cannot be covered.**
- Sphagnum moss may be used in or as part of growing medium and as top dressing. (Sphagnum should consist only of “natural” sheet moss or fibers; shredded and milled sphagnum peat is not permitted.) Dyed or colored moss is not permitted. Spanish moss (*Tillandsia* sp.) is not permitted as a top dressing. It is allowable as a companion plant with other bromeliads.
- Moss-lined, log, or bark **containers** will be accepted only for begonias, ferns, gesneriads, and orchids. Class dimension restrictions will apply.
- Sizes for Terrariums, Wardian-style cases, and all other non-standard containers will refer to **outside** dimensions, excluding bases, stands, feet, etc. The measurement includes any object or material that extends beyond the base container that supports the plants in any way.
- Aquariums are not permitted in any classes.
- Terrariums **must** have **clear, rigid** covers.
- Inconspicuous clear plastic saucers are **required** in classes 8450, 9450, 8455, 9455, 8730, and 9730. Write your name on the bottom of the saucer with a waterproof pen. If possible, write the plant name on the saucer, too.
- Unless no pot size is indicated, all bulbs must be grown and shown in pots of the size specified. However, an entire clump of bulbs may be transplanted into a clean pot of the same size for the Show.
- “Double-potting” is permitted. The outer container should be in proportion to the plant size and must conform to the size requirements of the class. The inner pot should not be visible; top dressing should cover the underlying pot.
- If supports are needed, they should be inconspicuous (e.g., green wood or green bamboo stakes available at garden stores). Staking should be as unobtrusive as possible (tied with green string; stake cut no higher than the plant).

GROOMING BEFORE THE SHOW

- A well-groomed plant has been properly pruned. Dead and damaged flowers and leaves should be removed. The flowers and leaves should be clean.
- Containers must be clean (no stains, streaks, crusts, chips, or other blemishes).
- Plants may be transferred from a dirty pot into a clean pot of the same size for the Show.
- Space and time for grooming at the Show is **extremely** limited. All major grooming should be done at home. Only last-minute tweaking is advisable at entry time.

TAKING ENTRIES TO THE SHOW

- **Access to the site for plant drop-off is strictly limited within registration times.** Exhibitors are encouraged to arrive early and enter all plants on Thursday for the first judging day. Wednesday entries should be limited to light grooming needs.
- Specific information about parking and plant drop-off will be sent to you in your credentials packet.
- **Entering lots of plants? Bring lots of help!** Please arrange for enough helpers to assist you in making your entries. Request helpers' credentials either by mail or in an e-mail to fsdb@pennhort.org by May 20. **Please provide their names and note the dates they will be assisting you.**
- Dollies and carts are in short supply. We suggest that you bring your own dolly, wagon, or cart.

GROOMING AND WATERING AT THE SHOW

- You may groom and/or water your entries only **before** they have been passed.
- You may not water your entries **after** they have been passed. Entries are watered every non-entry morning by a volunteer watering crew. If you have special requests (e.g., Do Not Water, Water Well, Extra Water), please fill out a Watering Request Form, which is available from the Horticulture Committee on entry days. If distilled or reverse osmosis water is required, you are responsible for providing enough water for the Show. The water must be in clearly marked jugs, and you must provide a sheet that identifies the specific plants that need it.
- The Watering Committee will not water any succulents unless requested to do so by the exhibitor. Please fill out a Watering Request Form, which is available from the Horticulture Committee on entry days.
- Supplemental watering and grooming (e.g., removal of dead or damaged flowers or leaves) may be performed at the discretion of the Horticulture Committee.

PASSING AND RECORDING

- Before they can be judged, all entries must be passed and recorded. Horticulture Aides (including Exhibitor Aides and Recorders) and Passers will be there to help you navigate each step of the entry process.
- Passers check to make sure that exhibits meet the specifications for the classes in which they are entered, are of Show quality in form and condition, are properly groomed (see above), are pest-free and disease-free, are in appropriate containers, are identified with the correct botanical name, and have the exhibitor's name on the bottom of the pot. **Exhibitors or their representative must remain with plants until they are passed and recorded in order to correct any problems discovered.**
- Once your entries have been passed, they may not be touched by you or anyone other than the Horticulture Committee. Stagers place the entries into the horticulture display areas after they have been passed and recorded. You may not touch other exhibitors' entries at any time.

- Passers and Recorders work together to make sure that the registration for each entry is accurate and complete.
- All EAD plants will be passed by Passers on the first entry day only. On Wednesday, EAD plants will not be passed again.

JUDGING

- Exhibits will be judged for horticultural excellence and conformance to class rules listed in this document. Judges are guided by point scales for each class.
- If merited, ribbons will be awarded for each class as follows: one First (blue), one or more Seconds (red), one or more Thirds (yellow), and one or more Honorable Mentions (white). **New exception: Par** judging will be allowed in the Grand Old Plant Classes; entries in a par class are judged individually against perfection rather than against each other, and more than one blue ribbon may be awarded.
- Class Commendations are awarded at the discretion of the judges and may only be awarded if every exhibit has received an award ribbon; a commendation ribbon (turquoise) will be placed on each exhibit in the class.
- Decisions of the judges are final. Entries designated “For Exhibition Only” will not be judged and will not receive comments, point scores, or sweepstakes points.

WHAT DO THE JUDGES LOOK FOR?

- **Cultural Perfection:** Vigorous, healthy appearance including foliage, flowers or fruit, and form characteristic of a well-grown plant. There should be no indication of pests or disease.
- **Distinctiveness:** Meritorious in aesthetic appeal; noteworthy in size and relationship to container.
- **Bloom:** Quality and quantity of bloom, including freshness and substance; mass effect if appropriate to the class.
- **Fruit:** Quality and abundance of fruit, if appropriate to the class, including color and mass effect.
- **Maturity:** Size of plant and foliage characteristic of a mature specimen.
- **Difficulty:** Challenging to grow (and bring to bloom, if applicable to the class); requiring specialized growing conditions, skill, and care.
- **Rarity:** Seldom grown and exhibited by amateur horticultural enthusiasts.

ENTRY AND AWARD POINTS

Points are awarded for entries and awards in all Competitive Classes. At the end of the Show, sweepstakes awards go to exhibitors and organizations accumulating the most points in a specific area of the Show (e.g., Horticulture) or in all categories (grand sweepstakes). Clubs and organizations receive points based on their club entries plus points earned by their members.

Horticulture and Orchid Classes (1 plant per container) Points

Pre-entry (for each judging day of entry)	01
First place (blue ribbon).....	12
Second place (red ribbon)	07
Third place (yellow ribbon)	05
Honorable Mention (white ribbon)	03

Small Collection Classes—3 or more plants (e.g., container gardens)

Pre-entry (for each judging day of entry)	02
First place (blue ribbon).....	15
Second place (red ribbon)	10
Third place (yellow ribbon)	07
Honorable Mention (white ribbon)	05

Additional points are given for special awards. A copy of the current Points and Awards list will be available on phsonline.org closer to the Show.

After the Show, exhibitors (individuals or clubs/organizations) may request “report card” printouts summarizing their entries, awards, and points. Contact the Shows Department (215-988-8822) or e-mail requests to fsguide@pennhort.org. Individual exhibitors can also print out their own report cards from the My Scores tab in their FSDB accounts.

HORTICULTURE AND ORCHID CLASSES

All classes for 2022 are repeated on **both** entry days (see page 11 for dates and times). Exhibitors may enter one or both days; please refer to the Horticulture Rules about re-entering, re-grooming, and re-passing on the additional entry day.

When you are filling out your entry form using FSDB or on paper, please include **the class number** for each class you want to enter. See page 12 for How to Enter.

Remember: Orchids may only be entered in classes 8700-8785 and 9700-9785. For Orchid Classes, see page 30.

“**Eligible for EAD**” designates the **only** classes allowed to use the Enter All Days (EAD) process. You will be required to agree to the EAD regulations in order to register any EAD entries in these classes. You can also enter these classes in the traditional way.

SUCCULENTS

Day 1	Day 2	Class Title/Class Description
8100	9100	<i>Agave</i> . Pot: 6" or under. Eligible for EAD.
8105	9105	<i>Aloe</i> . Pot: 6" or under. Eligible for EAD.
8110	9110	<i>Bowiea</i> . Updated pot size: 8" or under.
8115	9115	Cactus grown in house. Pot: 6"-10". Eligible for EAD.
8120	9120	Cactus, flowering or fruiting. Pot: 6"-10". Eligible for EAD.
8125	9125	Cactus, non-flowering. Pot: 6"-10". Eligible for EAD.
8130	9130	<i>Crassula</i> . Pot: 6"-10". Eligible for EAD.
8135	9135	<i>Echeveria</i> . Pot: 6"-10". Eligible for EAD.
8140	9140	<i>Euphorbia</i> . Pot: 6"-10". Eligible for EAD.
8145	9145	<i>Gasteria</i> . Pot: 6"-10". Eligible for EAD.
8150	9150	<i>Haworthia</i> and <i>Haworthiopsis</i> . Pot: 6"-10". Eligible for EAD.
8160	9160	<i>Mammillaria</i> , flowering. Pot: 6"-10". Eligible for EAD.
8165	9165	<i>Mammillaria</i> , nonflowering. Pot: 6"-10". Eligible for EAD.
8170	9170	<i>Sansevieria</i> (syn. <i>Dracaena</i>). Updated pot size: 6"-10". Eligible for EAD.
8175	9175	Any other succulent. Updated pot size: 6"-10". Eligible for EAD.
8177	9177	Novice Class: Any other succulent. Pot: 4"-6". Eligible for EAD. Open only to exhibitors who have not won a blue ribbon in the Horticulture classes of the PHS Philadelphia Flower Show (except Bulbs and Orchids) prior to 2022.

BULBS

Day 1	Day 2	Class Title/Class Description
8180	9180	Bulbs (e.g., <i>Allium</i> , <i>Canna</i> , <i>Lilium</i>).
8182	9182	Novice Class: Bulbs. Open only to exhibitors who have not won a blue ribbon in the Bulb classes of the PHS Philadelphia Flower Show prior to 2022.
8185	9185	Bulb Garden: Any combination of bulbs, arranged for artistic and horticultural excellence in a pot 12" or under. A plant list must be provided. See box on page 27.

INDOOR DELIGHTS

Day 1	Day 2	Class Title/Class Description
8200	9200	Aroid (e.g., <i>Colocasia</i> , <i>Arum</i> , <i>Caladium</i>). Updated pot size: 6"-12". Eligible for EAD.
8205	9205	<i>Amorphophallus</i> . Eligible for EAD.

8210	9210	<i>Begonia</i> , flowering. Updated pot size: 4" or over.
8215	9215	<i>Begonia</i> , foliage. Updated pot size: 4" or over.
8220	9220	Any member of Bromeliaceae family. Pot: 6"-10". Eligible for EAD.
8225	9225	Caudiciform plant. Pot: 4" or over. Eligible for EAD.
8230	9230	<i>Clivia</i> . Pot: 6"-10". Up to three entries of the same species are permitted for this class. Eligible for EAD.
8235	9235	Fern (Pteridophyte). Pot: 10" or under. No hanging baskets. For hanging containers, see page 28.
8240	9240	<i>Hedera</i> and other vines. Pot: 6"-10". Eligible for EAD.
8250	9250	<i>Hoya</i> . Pot: 6"-10". Eligible for EAD.
8260	9260	<i>Monstera</i> . Pot: 6"-10".
8265	9265	<i>Philodendron</i> . Updated pot size: 5" or over.
8270	9270	<i>Saintpaulia</i> (African violet). Pot size no longer specified.
8275	9275	<i>Streptocarpus</i> . Pot 10" or under.
8280	9280	Gesneriad, other than <i>Saintpaulia</i> or <i>Streptocarpus</i> . Pot size no longer specified.
8300	9300	Beginner's Luck: Informal flowering plant (no bulbs). Pot: 8" or under. Open only to first-time exhibitors in the Horticulture Classes.
8305	9305	Beginner's Luck: Informal foliage plant (no bulbs). Pot: 8" or under. Open only to first-time exhibitors in the Horticulture Classes.
8310	9310	Flowering or fruiting plant grown in your house; no cactus, other succulent, <i>Clivia</i> , or bulb. Pot: 10" or under.
8315	9315	Flowering or fruiting plant grown in your office; no cactus, other succulent, <i>Clivia</i> , or bulb. Pot: 6" or under.
8317	9317	Novice Class: Flowering or fruiting plant grown in your office; no cactus, other succulent, <i>Clivia</i> , or bulb. Pot: 6" or under. Open only to exhibitors who have not won a blue ribbon in the Horticulture classes of the PHS Philadelphia Flower Show (except Bulbs and Orchids) prior to 2022.
8320	9320	Foliage plant grown in your house; no cactus, other succulent, <i>Clivia</i> , or bulb. Pot: 6" or under.
8322	9322	Novice Class: Foliage plant grown in your house; no cactus, other succulent, <i>Clivia</i> , or bulb. Pot: 6" or under. Open only to exhibitors who have not won a blue ribbon in the Horticulture classes of the PHS Philadelphia Flower Show (except Bulbs and Orchids) prior to 2022.
8325	9325	Foliage plant grown in your office; no cactus, other succulent, <i>Clivia</i> , or bulb. Pot: 10" or under.

8330	9330	Fragrant flowering plant. Pot: 8" or under.
8335	9335	Fragrant foliage plant. Pot: 8" or under.
8340	9340	Plant(s) on a form; more than one species, variety, or cultivar permitted. Any non-plant component must be pre-approved by the Horticulture Committee by Friday, May 20. Eligible for EAD.

HARDY PLANTS

Day 1	Day 2	Class Title/Class Description
8350	9350	Hardy flowering shrub; only one plant per pot. Pot: 10" or over.
8355	9355	<i>Chamaecyparis</i> , dwarf or miniature. Pot: 6" or over; only one plant per pot permitted. Eligible for EAD. Dwarf=grows less than 6" per year; Miniature=grows less than 2" per year.
8360	9360	Dwarf conifer, other than <i>Chamaecyparis</i> . Must be a natural dwarf (grows less than 6" per year). Pot: 6" or over; only one plant per pot permitted. Eligible for EAD.
8370	9370	Rock garden plant in bloom. Pot: 6" or under. Eligible for EAD.
8375	9375	Rock garden plant, non-flowering. Pot: 6" or under. Eligible for EAD.

HERBS AND PELARGONIUMS

Day 1	Day 2	Class Title/Class Description
8400	9400	Herb. Pot: 6" or under. Only one plant per pot permitted. Eligible for EAD.
8405	9405	Novice Class: Herb. Pot: 6" or under. Only one plant per pot permitted. Eligible for EAD. Open only to exhibitors who have not won a blue ribbon in the Horticulture Classes of the PHS Philadelphia Flower Show (except Bulbs or Orchids) prior to 2022.
8410	8410	Medicinal herb. Pot 8" or under. Only one plant per pot permitted. Now eligible for EAD. Note: You must state the medicinal use on both 4"x6" cards that accompany the plant--the 4"x6" card is what the judges see! To facilitate the preparation of the PHS cards at the Show—the ones the public sees—please mail or email the plant name, entry number, and medicinal use to fsdb@pennhort.org by Friday, May 20.
8420	9420	<i>Pelargonium</i> , non-flowering. Pot: 6"-10". For flowering, see 8655 and 9655.

BOG PLANTS

Day 1	Day 2	Class Title/Class Description
8450	9450	<i>Pinguicula</i> (Butterworts). Pot size no longer specified. Inconspicuous clear plastic saucers are required. If plants need distilled water, it must be provided by the exhibitor. Eligible for EAD.
8455	9455	Bog plant/carnivorous plant other than <i>Pinguicula</i> . Pot size no longer specified. Inconspicuous clear plastic saucers are required. If plants need distilled water, it must be provided by the exhibitor. Eligible for EAD.

GARDENS IN CONTAINERS; PLANTS ON FORMS

If you are entering a class that permits two or more different plants per entry (e.g., bulb garden, container garden, terrarium, plants on a form), **you must submit a preliminary plant list**—online via your FSDB entry, by e-mail to fsdb@pennhort.org, or with your paper entry form **by Friday, May 20**. The earlier you submit this list, the sooner it can be checked by the Nomenclature Committee. On the preliminary list, it is advisable to include all the plants that you might enter, even if you do not actually include all those plants as part of your entry. If you are entering via FSDB, you should check your plant list prior to the Show to see if proposed names (in red, followed by an asterisk) have been corrected. If you enter on a paper form, your corrected plant list will be sent in your May packet. **Please be sure that your final list at the Show has the correct names.**

At the Show, you must provide two copies of a final, corrected, legible, numbered plant list in waterproof ink on a 4"×6" index card along with the 4"×6" cards required for each entry. **You must also provide a diagram of your entry no larger than 8½ x 11", with the plants numbered to correspond to your final corrected plant list.**

Remember: Terrariums and Wardian-style Cases are for plants that need high humidity.

Day 1	Day 2	Class Title/Class Description
8460	9460	Terrarium. One or more plants, in a container not to exceed 10" in any dimension, including diagonal or diameter. Not permitted: Artificial accessories or Wardian-style cases. Terrariums must have clear, rigid covers. A plant list is required; see box above. Eligible for EAD.
8462	9462	New class: Terrarium. One or more plants, in a container 10" or over in any dimension, including diagonal or diameter. Not permitted: Artificial accessories or Wardian-style cases. Terrariums must have clear, rigid covers. A plant list is required; see box above. Eligible for EAD.
8465	8465	Wardian-style case. A minimum of five different species, varieties, or cultivars, in a container with a diagonal measurement of 16" or under. No artificial accessories are permitted. A plant list is required; see box above. Eligible for EAD.

8470	9470	Container garden; minimum of three different species, varieties, or cultivars in an open container not to exceed 18" in any dimension, including diagonal. A plant list is required; see box on page 27. Eligible for EAD.
8472	9472	Novice Class: Container garden; minimum of three different species, varieties, or cultivars in an open container not to exceed 18" in any dimension, Open only to exhibitors who have not won a blue ribbon in the Horticulture classes of the PHS Philadelphia Flower Show (except Bulbs and Orchids) prior to 2022. A plant list is required; see box on page 27. Eligible for EAD.

HANGING CONTAINERS

One species, variety, or cultivar per container.
Hanging containers are accepted in these classes only.

Day 1	Day 2	Class Title/Class Description
8600	9600	Flowering or fruiting plant(s), no ferns. Container: 6"-12".
8605	9605	Foliage plant(s), no ferns. Container: 6"-12".
8610	9610	Specimen fern (Pteridophyte). Container: 6"-12".
8615	9615	Epiphytic plant(s); no orchids.

GRAND OLD PLANTS

New: "Par" judging will be allowed in the Grand Old Plant Classes. Entries in a par class are judged individually against perfection rather than against each other. To determine what award an entry should receive, a scale of points from 1 to 100 is used: 90-100=First (blue ribbon); 85-89=Second (red ribbon); 80-84=Third (yellow ribbon). Honorable mentions are not awarded in a par class.

Day 1	Day 2	Class Title/Class Description
8640	9640	Plants 10-20 years old. The age of the plant must be stated on both 4"×6" cards. To facilitate the preparation of the PHS cards at the Show—the ones the public sees—please mail or email the plant name, entry number, and plant age to fsdb@pennhort.org by Friday, May 20. Now eligible for EAD. Permitted: More than one plant of the same species, variety, or cultivar per container. For 2022, exhibitors may make up to three entries in this class.
8645	9645	Plants over 20 years old. The age of the plant must be stated on both 4"×6" cards. To facilitate the preparation of the PHS cards at the Show—the ones the public sees—please mail or email the plant name, entry number, and plant age to fsdb@pennhort.org by Friday, May 20. Now eligible for EAD. Permitted: More than one plant of the same species, variety, or cultivar per container. For 2022, exhibitors may make up to three entries in this class.

NEW FOR 2022

Day 1	Day 2	Class Title/Class Description
8650	9650	<i>Salvia</i> species or hybrid, in bloom. Pot: 8"-10".
8651	9651	Any Larkspur or <i>Delphinium</i> . Pot: 8"-10"; more than one plant per pot permitted; staking is permitted.
8652	9652	<i>Clematis</i> , in bloom. Pot: 8"-10"; trellis or staking is permitted.
8653	9653	<i>Coleus</i> (formerly called <i>Plectranthus scuttellarioides</i>). Pot: 6"-8".
8654	9654	Any <i>Papaver</i> (Poppy), grown from seed by exhibitor. Pot: 8" or under; more than one plant per pot permitted.
8655	9655	<i>Pelargonium</i> , flowering. Pot: 6"-10". For non-flowering, see 8420 and 9420.
8656	9656	Novice Class: Radishes (<i>Raphanus sativus</i>), grown from seed by exhibitor. Pot: 8" or under; more than one plant per pot permitted. Open only to exhibitors who have not won a blue ribbon in the Horticulture classes of the PHS Philadelphia Flower Show (except Bulbs and Orchids) prior to 2022.
8660	9660	Grasses, Sedges, Rushes, and their relatives, grown in a container. One variety; not over 36" high. Eligible for EAD.
8665	9665	Grasses, Sedges, Rushes, and their relatives, grown in a container. One variety; over 36" high. Eligible for EAD.
8670	9670	Salad Bowl Collection. A collection of three or more specimens of vegetables, which may include herbs, in one container such as a five-gallon bucket or milk crate. Two or more varieties are required. A plant list is required; see box on page 27. Not eligible for EAD.
8672	9672	Pasta Sauce Collection. A collection of three or more specimens of plants suitable for pasta sauce, in one container such as a five-gallon bucket or milk crate. Two or more varieties are required. A plant list is required; see box on page 27. Not eligible for EAD.
8675	9675	Curb Appeal Collection. A collection of three or more specimens of annual plants suitable for display on a front stoop, front porch, etc., in one container. Two or more varieties are required. A plant list is required; see box on page 27. Not eligible for EAD.

ORCHID CLASSES

Classes are repeated on **both** entry days (see page 11 for dates and times). Exhibitors may enter one or both days; please refer to the Horticulture and Orchid Rules about re-entering, re-grooming, and re-passing on additional entry days.

Access to the site for plant drop is strictly limited within registration times. Exhibitors are encouraged to arrive early and enter all plants on Thursday for the first judging day. Wednesday entries should be limited to light grooming needs.

New for 2022: All Orchid Classes will be judged on *both* days. In the past, some classes were only judged on the first day.

For all classes:

- All entries must be pre-registered by April 30.
- Please use clay, dark green or black plastic, natural fiber, or ceramic containers that are not highly decorated. White or highly glazed pots are not permitted. If necessary, double-pot prior to the Show to meet these requirements.
- **If you plan to enter both days, you should use the EAD process (see page 13).** For EAD entries at the Show, prepare **three** 4"×6" cards listing the class numbers and plant name.
- **Please note:** If you are not sure about the flower size, you should pre-enter **all** *Phalaenopsis* classes each day. This prevents having to move to the appropriate class on entry days.
- Orchids may be presented in a clear closed container not to exceed 18" in any dimension.
- References for orchid names are RHS (apps.rhs.org.uk/horticulturaldatabase/orchidregister/orchidregister.asp) and Kew (wcsp.science.kew.org).

If you are unsure about a botanical name, it is permissible to use **species** and **hybrid** (e.g., *Phalaenopsis* hybrid). Orchid names are not required when pre-registering. Plant names may be updated/added to FSDB entries up through May 20.

ORCHIDS

Day 1	Day 2	Class Title/Class Description
8700	9700	<i>Cattleya</i> and Alliance species. Eligible for EAD.
8705	9705	<i>Cattleya</i> and Alliance hybrids. Eligible for EAD.
8710	9710	<i>Dendrobium</i> species and hybrids. Eligible for EAD.
8715	9715	<i>Paphiopedilum</i> species and hybrids. Eligible for EAD.
8720	9720	<i>Phalaenopsis</i> flowers 2.5" or more across. Eligible for EAD.

8725	9725	<i>Phalaenopsis</i> flowers less than 2.5" across. Eligible for EAD.
8730	9730	<i>Phragmipedium</i> species and hybrids. Eligible for EAD.
8735	9735	<i>Vanda</i> and Alliance species and hybrids. Eligible for EAD.
8740	9740	Any other species or hybrid not listed above. Eligible for EAD.
8750	9750	<i>Phalaenopsis</i> in a Teacup. One or more <i>Phalaenopsis</i> plants (no cut flowers), Other non-blooming foliage is permitted. No artificial materials. In addition to two 4"x6" cards, please provide one 4"x6" card with a printed plant list. Eligible for EAD.
8755	9755	Orchid other than <i>Phalaenopsis</i> in a Teacup. One or more non- <i>Phalaenopsis</i> plants (no cut flowers), Other non-blooming foliage is permitted. No artificial materials. In addition to two 4"x6" cards, please provide one 4"x6" card with a printed plant list. Eligible for EAD.
8760	9760	Orchid Terrarium. A terrarium containing an aesthetically pleasing arrangement of at least two blooming orchid plants (no cut flowers). Other non-blooming plants are permitted, but orchids must predominate. The terrarium may not exceed 20" in length, width, or height. (See Terrarium definition on page 15.) Eligible for EAD. Terrariums must have clear, rigid covers. No aquariums. In addition to two 4"x6" cards, please provide one 4"x6" card with a printed plant list.
8765	9765	Any non-blooming or budded orchid with interesting foliage. Eligible for EAD.

NOVICE ORCHIDS

Novice Orchid classes are open to anyone who has never won a blue ribbon in the Orchid Classes of the PHS Philadelphia Flower Show prior to 2022.

Day 1	Day 2	Class Title/Class Description
8770	9770	Novice: <i>Cattleya</i> Alliance species and hybrids. Eligible for EAD.
8775	9775	Novice: <i>Paphiopedilum</i> species and hybrids. Eligible for EAD.
8780	9780	Novice: <i>Phalaenopsis</i> species and hybrids. Eligible for EAD.
8785	9785	Novice: Any other species and hybrids. Eligible for EAD.

HORTICULTURE AND ORCHID CLASSES AWARDS

- 24 PHS Ribbon—presented on each entry day, if merited, to the highest scoring blue ribbon entry of one variety in the Horticulture Classes.
- 24A PHS Ribbon—presented on each entry day, if merited, to the second-highest scoring blue ribbon entry of one variety in the Horticulture Classes.
- 25 PHS Ribbon—presented on each entry day, if merited, to the highest scoring blue ribbon entry having two or more varieties.
- 25A PHS Ribbon—presented on each entry day, if merited, to the second highest scoring blue ribbon entry having two or more varieties.
- 26 PHS Orchid Award—presented each entry day for the outstanding blue-ribbon winner in the Orchid classes.
- 26A PHS Orchid Ribbon—presented each entry day for the second-highest scoring blue-ribbon winner in the Orchid classes.
- 26B Walter M. Off Award—presented, if merited, for the best species orchid.
- 26C Lois and James Duffin Award—presented, if merited, for the best hybrid orchid.
- 26D PHS Novice Orchid Award—presented, if merited, for the outstanding blue-ribbon winner in the Novice Orchid classes.
- 30 Philadelphia Unit of The Herb Society of America, Inc., Awards—for an outstanding use of herbs or an individual specimen herb. A total of nine ribbons may be awarded.
- 31 North American Rock Garden Society Delaware Valley Chapter Doretta Klaber Award—for the outstanding entry encompassing all Rock Garden classes over the course of the Show.
- 32 North American Rock Garden Society Delaware Valley Chapter Ribbons—presented, if merited, to outstanding entries in the Rock Garden classes (8370, 8375, 9370, 9375). Four ribbons per day may be awarded.
- 35 American Primrose Society Award, Doretta Klaber Chapter Ribbons—for the best Primula in the Horticulture section. Two ribbons per day may be awarded.
- 34 PHS Ribbons—for the outstanding blue-ribbon winner in the bulb section, other than Narcissus classes.
- 37 Meadowbrook Farm Indoor Gardening Trophy—to the outstanding blue-ribbon winner in classes 8460-8470, 9460-9470, 8760, and 9760.
- 38 The Edith Wilder Scott Award—given by the Four Counties Garden Club for the outstanding blue-ribbon winner in the Horticulture Classes.

- 39 Philadelphia Cactus & Succulent Society Ribbons—presented, if merited, to outstanding cactus or other succulent entries in any class among the Horticulture classes of the Show. Four ribbons per day may be awarded.
- 88 The Gerald S. Barad Award—given by the Philadelphia Cactus & Succulent Society for the outstanding blue-ribbon winner in the cactus and succulent classes on each Horticulture entry day.
- 36 Far Out Cactus Award—for the outstanding blue-ribbon winner in any cactus or succulent class.
- 91 The Delaware Valley Branch, American Begonia Society Ribbon—presented, if merited, to the outstanding flowering Begonia entries in the Horticulture classes. Two ribbons per day may be awarded.
- 92 The Delaware Valley Branch, American Begonia Society Ribbon—presented, if merited, to the outstanding foliage Begonia entries in the Horticulture classes. Two ribbons per day may be awarded.
- 40 The Susie Walker Award—given by the Wissahickon Garden Club for the outstanding blue-ribbon winner in the Begonia classes on each Horticulture entry day.
- 42 The Gesneriad Society Liberty Bell Chapter Ribbon—presented, if merited, to the outstanding flowering gesneriad entries in the Horticulture classes. Two ribbons per day may be awarded.
- 43 The Gesneriad Society Liberty Bell Chapter Ribbon—presented, if merited, to the outstanding grown-for-foliage gesneriad entries in the Horticulture classes. Two ribbons per day may be awarded.
- 68 The American Ivy Society Ribbons—presented, if merited, for the outstanding ivy entry. One ribbon per day may be awarded.
- 86 National Garden Clubs, Inc. Medal for Horticulture—Awarded, if merited to the horticultural exhibit judged by a NGC, Inc. panel to be the finest in a major non-standard flower show. Must score 95 points or more. Awarded in even years (next awarded in 2022).
- 99 New: Kizzie Lou Fann Vance Award, for the outstanding blue-ribbon winner in the Novice Horticulture and Orchid classes at the PHS Philadelphia Flower Show.

SWEEPSTAKES AWARDS

- 70 The Hamilton Greenhouse Award—for the runner-up in the individual Horticulture Classes Sweepstakes.
- 71 Mrs. Lamot du Pont Copeland Horticultural Sweepstakes Trophy—for the individual accumulating the greatest number of points in the Horticulture Classes.
- 72 PHS Award—for the garden club or horticultural organization accumulating the greatest number of points in the Horticulture Classes. A minimum of three members must enter.
- 73 Sarah C. Z. Groome Award—to the individual accumulating the greatest number of points in the following Artistic Classes: Backed Pedestal, Miniature Arrangements, Open Platform A, Open

Platform B, Open Platform C, Open Platform D, Jewelry, Photography, and Pressed Plant Material. The winner must have a minimum of three Artistic entries and must have entered two or more Artistic categories.

- 74 Rosemarie P. Vassalluzzo Artistic Sweepstakes Trophy—presented by the Four Lanes End Garden Club to the garden club or horticultural organization accumulating the greatest number of points in the Artistic Section. A minimum of three members must enter and must have entered two or more Artistic categories.
- 75 Margaret Buckley Zantzinger Award—for the garden club accumulating the greatest number of points in all competitive sections of the PHS Philadelphia Flower Show. A minimum of three members must exhibit in Artistic classes in two or more Artistic categories and a minimum of three members must exhibit in Horticulture classes.
- 76 The PHS Grand Sweepstakes Trophy, donated by Mrs. Henry W. Breyer, Jr.—to the individual accumulating the greatest number of points in all competitive sections of the Show. A minimum of three entries in Artistic classes (in two or more Artistic categories) and a minimum of three entries in Horticulture Classes is required.