

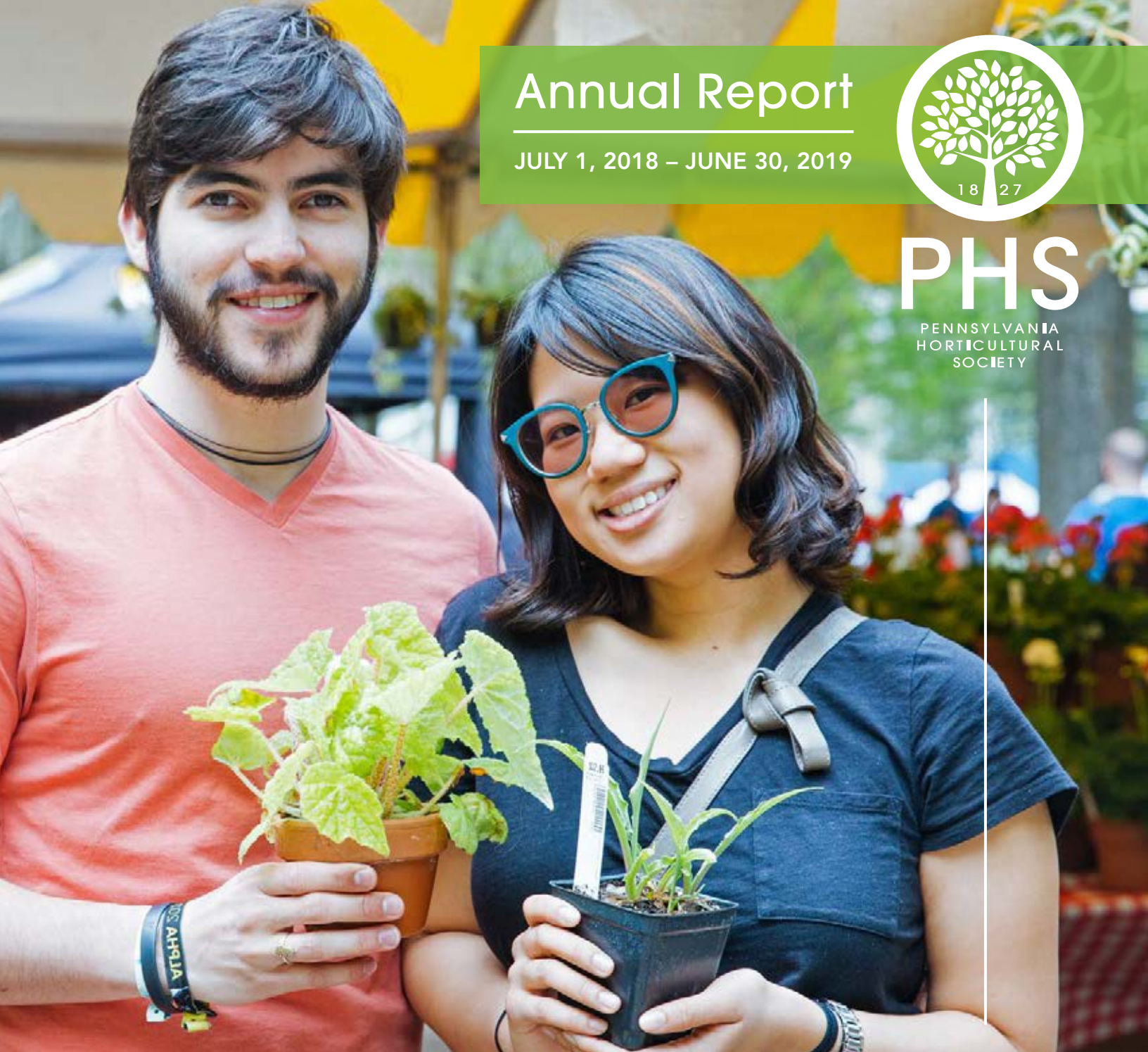
Annual Report

JULY 1, 2018 – JUNE 30, 2019



PHS

PENNSYLVANIA
HORTICULTURAL
SOCIETY



Let's Plant With Purpose • Let's Grow Together • We'll Garden for the Greater Good



2019 Annual Report

contents

4-5	Our Mission & Letter from the President
6-7	PHS at 200: A Shared Vision
8-9	Vision2027 Strategic Planning Process
10-11	Strategic Pillars
12-13	Growing Audiences and Delivering Impact
14-17	Impact Priorities
18-21	Places and Faces of PHS
22-23	PHS Impact By the Numbers 2019
24	Consolidated Statement of Activities
25	Board of Directors and Executive Team
26-27	Acknowledgements
28-37	Contributors

Cover: Visitors to the PHS
Rittenhouse Flower Market.

Facing Page: The Azalea
Garden, a PHS public landscape.



The Pennsylvania Horticultural Society
connects people with horticulture,
and together we create beautiful,
healthy and sustainable communities.





At PHS, we believe that people cultivating gardens can transform our world for the better. We call this gardening for the greater good.

I rarely experience a day that does not include a thought or conversation about a pressing issue threatening the health and well-being of people and our environment. At PHS, we believe that people cultivating gardens can transform our world for the better. We call this gardening for the greater good. And we believe that it is more important now than ever.

PHS has decades of experience making positive impact happen. You see this in the more than 200 neighborhoods where we work with residents to plant trees, sustain community gardens, and clean and green vacant lots. We have transformed more than a third of Philadelphia's vacant lots into positive drivers of community health and a path to employment for more than 100 returning citizens. We have trained 5,000 volunteer Tree Tenders and work with them each year to plant 9,000 trees across our region. In 2019, we completed restoring 1,000 acres of tree cover along watersheds. The 125 community gardens in our network are growing more stable and have never been more important to the fabric of the city than they are today.

We are keenly aware of the beauty that the gardeners we serve create every day at home. PHS reaches hundreds of thousands of gardeners every year through the Philadelphia Flower Show, our McLean Library and education programs, and our network of public gardens and landscapes. We are committed to inspiring and equipping these gardeners with the knowledge they need to turn their home gardens into forces for social and environmental good.

In this year's report, we describe the process we undertook in 2019 to define our vision and what impact we want to be making in the world leading up to our 200th anniversary in 2027. This vision and strategic plan are fueling us as we move forward to unlock the power of horticulture to improve the health and well-being of all of us.

We know that horticulture can be a powerful tool to address the challenges that face our region and world. To maximize our impact, we need to build a PHS community that welcomes and invites everyone in this region to contribute their time, passion, and financial support to our cause. I hope you will remain part of this community and invite others to join. Thank you for investing in this essential work that impacts so many.

Sincerely,

Matt Rader
PHS President

PHS at 200: A Shared Vision

We envision a world where cultivating plants is seen as essential to life.



We will awaken people to the transformative power of horticulture as a tool of social change.



We see a world where everyone appreciates the joy of plants and gardens in their daily lives.





Across the region and the nation, PHS will be regarded as a thought leader and an agent of change, and people of all ages and backgrounds will join us in our cause.

We will use horticulture to cultivate social connection, livable environments, healthy food, and economic opportunity.



Clockwise from left: A PHS Gardening Contest entrant who grows new plants by propagation and seed-saving shows off his seedlings; Gardeners who participated in the 2019 Community Gardens Day; Awbury Arboretum's community garden was selected as one of the finalists in the People's Choice Award in the 2019 Gardening and Greening Contest; Plant swaps are a popular event at the PHS Pop Up Gardens.

Vision2027 Strategic Planning Process

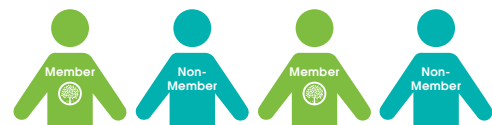
Our strategic planning process was underpinned by three criteria or lenses through which we examined current activities, evaluated opportunities to expand and grow, and ultimately determined the most compelling areas of focus. We asked ourselves and our stakeholders:

- What are the unmet social, environmental, economic, and other needs in our region?
- Can horticulture be harnessed as a solution to these needs?
- Are there supporters willing to invest in our solutions and the impact we make?

A large and comprehensive stakeholder engagement effort was integral to answering these questions. We conducted an internal program audit and review with our staff, and convened working groups and advisory committees of staff, board, and external partners to guide our thinking. We also launched a large public outreach and engagement campaign in the spring and summer of 2018, and followed it with a targeted series of focus groups and quantitative research.

PHSVision2027 Stakeholder Engagement:

1,000+ online respondents to surveys of PHS members and non-members



550+ "on the street" interviews



6 Community group sessions throughout Philadelphia



4 Philadelphia region focus groups



5 Staff Travel Fellowships seeking best practices around the world





Top: "Garden to Vase" workshop at PHS Meadowbrook Farm.

Bottom, left to right: Harvest from a community garden; PHS Rittenhouse Flower Market.



Strategic Pillars

The planning process culminated in a series of organization-wide conversations through which we developed our long-term strategy, comprised of three pillars. Each pillar is a unique change priority that PHS will pursue through 2027.

1 Create a Culture of Innovation and Accountability

- Focus all our work on activating horticulture to advance four impact priorities: creating social connection, livable environments, healthy food access, and economic opportunity.
- Build a single framework for impact and business performance, rigorously assess all activities, and transform/eliminate activities that do not deliver on at least two priorities.
- Become a place where entrepreneurialism thrives and fiscal responsibility is the norm; establish a new opportunity evaluation process that reviews potential projects and programs on consistent criteria.
- Establish credibility as a must-have partner for our impact priorities; partner with research institutions and universities to measure and analyze impact.



This page: TD Bank employees participating in a PHS tree planting.

Facing page, left to right: PHS volunteer assisting guests at the Philadelphia Flower Show; A PHS public landscape along Columbus Boulevard.



2 Onboard and Activate Agents of Change

- Embrace diversity, equity, and inclusion to build a staff, governance team, membership, and audience that reflects the communities we serve.
- Establish a PHS philosophy of horticulture that inspires people and supports our impact priorities – and advance it through the Flower Show, public landscapes, and education.
- Build and engage an audience committed to our cause and actively support it with time, money, and passion.
- Build partnerships with businesses and institutions to advance our cause.

3 Implement a New Model of Urban Greening at Scale

- Unify and refine existing greening programs to support new, place-based model that delivers on all four impact priorities.
- Lead a limited number of large-scale advocacy and education projects that advance our impact priorities at the civic level.
- Expand/deepen reach to new places beyond the city of Philadelphia as impact need and business opportunity allow.



Growing Audiences and Delivering Impact

To better serve our communities and increase our impact, PHS will re-orient its work within four major programmatic areas:



Healthy Neighborhoods

PHS recognizes neighborhoods as vital partners in making impactful change for people. PHS will develop a place-based urban greening model that targets its extensive suite of programs – community gardens, trees, vacant land management, and green stormwater infrastructure – in distinct neighborhoods, informed by specific community needs. Over the long-term, PHS will work with academic and research institutions to document the impacts of these programs on health and well-being.



Gardener Engagement

Home gardeners have long understood the power of horticulture to make transformative change. Through a new Gardener Engagement initiative, PHS will create a movement among backyard gardeners by convening collective action projects and by equipping them with the knowledge and tools they need to make a difference through their own gardening activities.



Facing page, left to right: Children participating in a PHS tree planting; 2019 PHS Gardening and Greening Contest participants.

This page, left to right: Visitors to the 2019 PHS Philadelphia Flower Show "Flower Power;" Guests enjoying a tour of PHS Meadowbrook Farm.



Shows and Events

The Philadelphia Flower Show will continue to be an integral part of our future. PHS will leverage the Flower Show as the nation's leading showcase for "gardening for the greater good," inspiring both the "plant-curious" and expert gardeners alike to put horticulture to work for good in their backyards and in their communities. Beyond the Flower Show, we will launch other events and shows locally and outside the region to bring the joy and benefits of gardening to new audiences and motivate them to join our cause.

Public Horticulture

PHS will elevate and integrate its public landscapes and public gardens – from Meadowbrook Farm in Abington, PA to the PHS-maintained spaces along the Benjamin Franklin Parkway, at the Philadelphia Navy Yard and along Columbus Boulevard – into examples of horticultural excellence where visitors can find inspiration and learn about best practices in gardening. This vast network of public spaces will serve our region in more visible ways while embodying the potential of horticulture to drive change, providing inspirational places for community members to volunteer, connect, and learn.

Impact Priorities

Increasing Access to Healthy Food

The ability to provide oneself, one's family, and one's community with fresh and healthy food is a basic human right. Yet, lack of healthy food access – and security – remains a pressing problem in our region: more than 21% of Philadelphians are currently food insecure. This condition differs from neighborhood to neighborhood, making it imperative that we equitably increase access to fresh, healthy food.

With renewed focus and clarity of purpose, PHS will use horticulture to expand access to fresh food and knowledge of how to grow it through our system of Community Gardening programs, our engagement with home gardeners, and our extensive network of public gardens and landscapes.



Together, these impact priorities are critical to the health and well-being of individuals and neighborhoods in the Greater Philadelphia region and beyond.

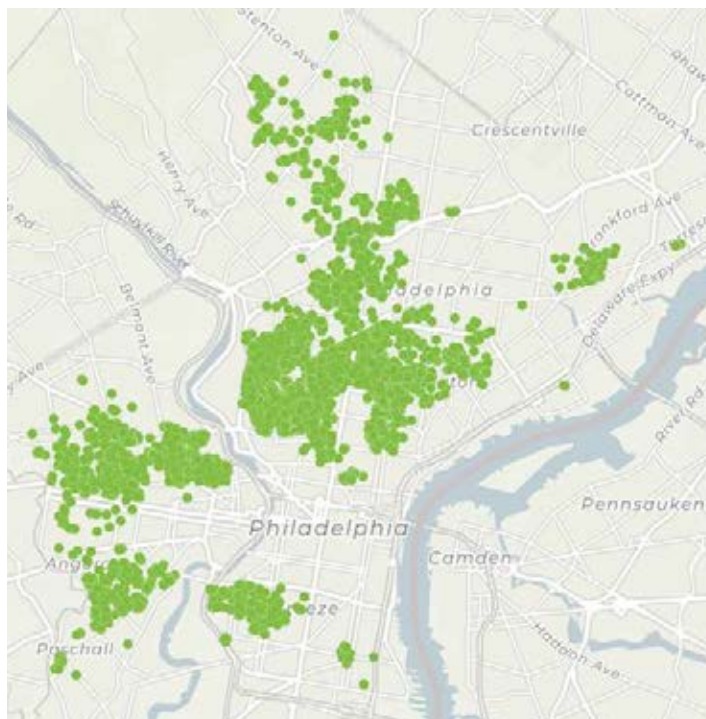
PHS has invested in community gardens for more than 40 years. Since 2006, PHS has served 125 gardens annually with seedlings and supplies to grow tens of thousands of tons of fresh, organic fruits and vegetables to share with neighbors and families in need.



Creating Healthy Living Environments

The Greater Philadelphia region is heavily urbanized, and it continues to experience significant growth, development, and environmental change. Safe, beautiful, environmentally sound streets and public spaces are fundamental to the quality of life for residents and contribute greatly to people's health and well-being. From planting street trees and greening vacant land to engaging people in gardening their front yards, PHS will enable community-driven change through education and hands-on support. PHS will concentrate efforts on those people and places that have suffered ongoing neglect to ensure that everyone enjoys the benefits of a high quality, livable environment.

PHS's LandCare program currently cleans and greens 12,000 vacant lots in Philadelphia. This work has been shown to decrease gun violence by 29% and feelings of depression by 69% for residents within a 5-minute walk of a PHS LandCare lot.



Facing Page: Healthy foods grown in Queen Village Community Garden.

This Page, left to right: PHS LandCare sites in the region; Residents enjoying a lot that was cleaned, greened and maintained by PHS LandCare.

Impact Priorities

Building Deeper Social Connections

It is no secret that person-to-person contact is an essential component to improved health and safety – it has even been linked to living longer. And yet, individuals are suffering from increased feelings of isolation and loneliness.

Our findings indicate that there is a strong desire to participate in community-driven initiatives that bring people closer together. PHS will build deeper social connections between people through gardening, incorporating collective action, community development, and outreach to build trust and bridge gaps among neighbors and between communities.

Below, left and right: Working with PHS and Catholic Social Services community gardeners at Our Lady of Fatima Community Garden in Bensalem celebrated the opening with a ribbon-cutting. A growing number of families are gardening in this newly created space.

Ten thousand square feet of underutilized open space in Bensalem was filled this past summer with corn, beans, squash, ajices (small sweet peppers) and much more. Our Lady of Fatima community garden serves Central American immigrants, many of whom grew up gardening with their families in Mexico, Guatemala, Puerto Rico, Ecuador, El Salvador, and Honduras and have settled in the Bensalem area.





Growing Economic Opportunity

Just as horticulture can be a powerful tool to strengthen neighborhoods and social connection, so too can it offer a path to growing economic opportunity through workforce development, especially for underserved individuals and communities.

With the unmet need for labor in all sectors of the horticultural industry forecasted to increase over time, we see opportunities to train and place significant numbers of workers in jobs, with an emphasis on those workers who need them most, including the recently incarcerated. PHS will seek to play a central role in preparing people to take advantage of new careers in this emerging sector.

Below: PHS LandCare creates healthy living environments and strengthens social connections.



Measuring Success

To understand our progress in executing our vision and strategy, PHS will develop processes to monitor and evaluate impact, engagement, and financial performance, through new performance management systems and organizational dashboards, and adjust course as needed. We will also seek to partner with renowned academic research institutions, such as the University of Pennsylvania and Temple University, to launch formal research studies that evaluate the external impact of PHS initiatives.

Cultivating Sustainable Support

Our impact is made possible by the generous financial support of individuals, foundations, and government entities. Yet, like many non-profits, we also rely heavily on our own investment activities and must raise revenue from new sources each year to sustain our work. Cultivating and growing our audience into a larger, more engaged community of people with a shared passion for the greater good will be critical to realizing our vision. With more people supporting our impact, we will be able to fund ongoing services for the community that we all value – like planting trees or supporting community gardens.

To learn more about this essential work, please contact Nancy Boutté Finn, Chief Development Officer, at nfinn@pennhort.org

Places and Faces of PHS



Top: PHS Tree Tenders partner with local communities to increase the tree canopy of the Greater Philadelphia region.

Bottom, left to right: PHS brought "Flower Power" to the city as part of its Bloom Philly promotion before the 2019 PHS Philadelphia Flower Show; Visitors enjoying the 2019 Flower Show.



Top, left to right: A plant swap at the PHS Pop Up Garden at uCity Square; Gardeners receiving plants at a PHS City Harvest distribution day.
Bottom: People enjoying the gardens that PHS maintains at the Rodin Museum on the Benjamin Franklin Parkway.

Places and Faces of PHS



Above: The PHS Members' Plant Dividend drew more than 1,000 people out on a sunny Saturday to select their free plants and learn gardening tips from PHS experts.



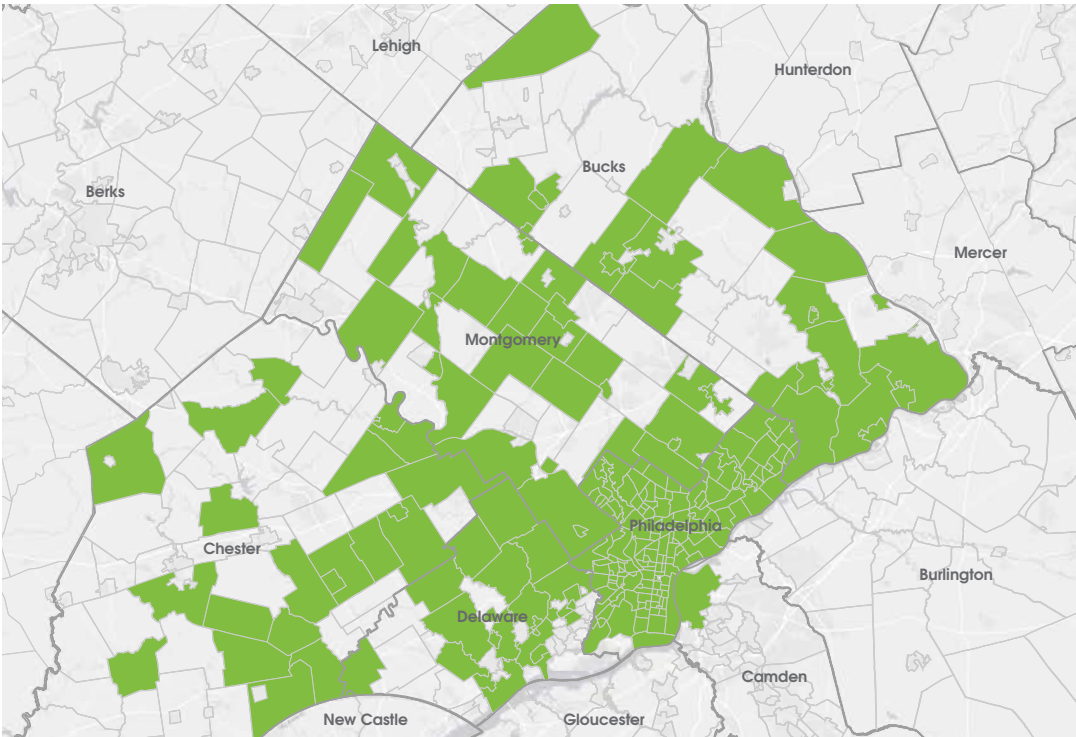
Top, left to right: Proud graduates of PHS Roots to Re-entry; PHS Green City Teachers fall training, the first session of the five-part class.

Bottom: JP Morgan Chase volunteers lent a helping hand at the Growing Together Garden in Grays Ferry.


PHS Impact By the Numbers 2019



PHS
works in
250+
neighborhoods



THE PHS COMMUNITY IS COMPOSED OF OVER **300,000** PEOPLE INCLUDING:

<p>18,700 PHS member households</p> 	<p>245,000 Philadelphia Flower Show visitors</p> 	<p>95,000 Pop Up Gardens guests</p> 	<p>5,500 PHS Meadowbrook Farm visitors</p> 
--	---	---	---



INCREASE ACCESS TO FRESH FOOD

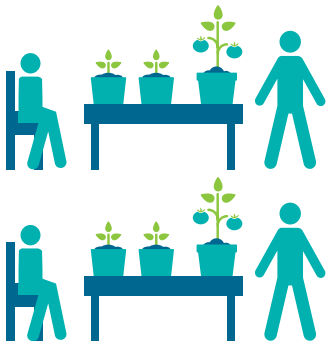
127

PHS supported community gardens donating fresh produce



259

attendees to food education workshops



CREATE HEALTHY LIVING ENVIRONMENTS

252

neighborhoods throughout the region served by PHS greening projects



1.5 million

residents living within 5 minutes of PHS greening projects



BUILD DEEPER SOCIAL CONNECTIONS

2,805

engaged volunteers



268

PHS supported neighborhood groups working to green their communities

(this includes Community LandCare, Community Garden, and Tree Tenders groups)



GROW ECONOMIC OPPORTUNITY

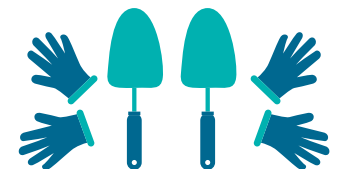
30

graduates of PHS workforce development programs



50

local greening contractors employed including 22 minority- or women-owned contractors



Consolidated Statement of Activities

For the Years Ended June 30, 2019 and 2018

Audited

Revenue and Support	Without Donor Restriction		With Donor Restriction	2019 Total	2018 Total
Earned revenue	\$ 13,280	51.2%	–	\$ 13,280	\$ 13,028
Contributions	\$ 7,277	28.1%	\$ 1,801	\$ 9,078	\$ 11,729
Membership	\$ 1,458	5.6%	–	\$ 1,458	\$ 1,758
Net investment activity	\$ 756	2.9%	\$ 989	\$ 1,745	\$ 3,679
Net assets released	\$ 3,169	12.2%	\$ (3,169)	–	–
Insurance Settlement Proceeds	–	0.0%	–	\$ –	445
Total Revenue and Support	\$ 25,940	100.0%	\$ (379)	\$ 25,561	\$ 30,639

Expenses

Flower Show	\$ 10,187	37.7%	–	\$ 10,187	\$ 10,175
Greening	\$ 11,258	41.6%	–	\$ 11,258	\$ 13,448
Education	\$ 1,549	5.7%	–	\$ 1,549	\$ 1,404
Development	\$ 2,868	10.6%	–	\$ 2,868	\$ 2,615
Meadowbrook Farm	\$ 1,193	4.4%	–	\$ 1,193	\$ 1,133
Total Expenses	\$ 27,055	100.0%	–	\$ 27,055	\$ 28,775

Change in net assets before change in pension benefit obligation	\$ (1,115)	–	\$ (379)	\$ (1,494)	\$ 1,864
Change in Pension Benefit Obligation	\$ (514)	–	–	\$ (514)	\$ 502
Change in net assets	\$ (1,629)	–	\$ (379)	\$ (2,008)	\$ 2,366

A copy of the printed consolidated financial statements will be provided on request. Values in thousands.

2020 Board of Directors and Executive Team

Board of Directors

Margaret McCarvill,
PHS Chair

Jason E. Vermillion,
PHS Vice-Chair

Loree Jones,
PHS Vice-Chair

Lloyd Brown

Robert C. Fell

Prema Gupta

Christine Henisee

Helen Horstmann

James Jolinger

Tracy Maeter

Ann Marshall

Molly Morrison

Stephen L. Mostardi

Robin Potter

John Soroko

Regina O'Brien Thomas

Angela Val

Charlie Wilmerding

Maria Wing

Matt Rader

PHS Executive Team

Matt Rader
President

Andrew Bunting
*Vice President,
Public Horticulture*

Nancy Boutté Finn
Chief Development Officer

Erin Dunkel
*Vice President, Marketing
and Communications*

Donald F. Fox
Chief Operating Officer

Casey Kuklick
*Director of Strategy,
Planning & Partnerships*

Sam Lemheney,
*Vice President, Chief of
Shows & Events*

Julianne Schrader Ortega
*Vice President,
Healthy Neighborhoods*

Jimmy Owens
*Vice President,
Business Development*

Lisa Stephano
Chief Marketing Officer

Tamela Vieira
*Chief Financial and
Administrative Officer/
Board Treasurer*



Above: Press conference for the 2019 PHS Philadelphia Flower Show.

Acknowledgements

Thank you from all of us at PHS. Your support allows us to help improve the health and well-being of the Philadelphia region.

From small, one-time donations to major transformational gifts, PHS is grateful to the individuals, institutions, family foundations, corporations, and government agencies that allow us to carry out our work.

In 2019, PHS launched the Community Gardens Giving Circle, bringing together a group of donors to collectively fund three years of investments in our work with fifty community gardens located in every corner of Philadelphia. The **Leslie Miller and Richard Worley Foundation** contributed the lead gift for this

initiative, which was built on by individual donors to reach a \$600,000 fundraised total. This allowed PHS to immediately re-invest in delivering the programs upon which communities throughout our region depend, and to ensure that community gardens continue to anchor Philadelphia neighborhoods for generations to come.

Other major gifts allowed us to create a comprehensive tool library, make continual improvements to the Rodin Museum garden, design a series of pilot programs to engage home gardeners, and install pollinator gardens on vacant lots.

Whether large or small, every contribution is critical to PHS's ongoing financial stability, and is an indication of the value our region places on horticulture as a tool to advance economic opportunity, create stronger social connections, increase access to fresh food, and create livable environments. Thank you to everyone who believes in this work and in the unique ability of PHS to carry it out successfully.



Left: A PHS public landscape at the Philadelphia Navy Yard.



PHS would like to thank the following PHSVision2027 committee members for their support and encouragement:

PHSVision2027 Steering Committee

Don Fox
Keith Green
Christine Henisee
Adam Hill
Joan Kapczynski
Mark Kerschner
Casey Kuklick
Sam Lemheney
Tracy Maeter
Margaret McCarvill
Julianne Schrader Ortega
Robin Potter
Matt Rader
Nicole Juday Rhoads
Margaret Sadler
Janine Scaff
Teri Scott
Patricia Smith
Lisa Stephano
Liane Sullivan
Reggie Thomas
Jason Vermillion
Tamela Vieira
Ken Wood
Charlie Wilmerding

PHSVision2027 Advisory Committee

Glen Ashton
Sarajane Blair
Carrie Borgenicht
Atif Bostic
Pam Bridgeforth
Marc Cammarata
Dominique Casimir
Saleem Chapman
Kylie Clowney
Beverly Coleman
Peter Cooke
Leomar Cooper
David Culp
Alex Dews
Alice Doering
Erich Enns
Joe Evans
Cara Ferrentino
Michelle Feldman
Owen Franklin
Ann Fuller
Daniel Garofalo
Jamie Gauthier
Eric Goldstein
Rose Gray
Jennifer Greenberg

Julie Hancher
Steve Hutton
Loree Jones
Melissa Kim
Andy Kricun
Risa Lavizzo-Mourey
Pam Rainey Lawler
Diana Lind
Steve Luxton
Ann Marshall
Dennis McGlade
Alan Metcalfe
Molly Morrison
Nancy Moses
Steve Mostardi
Helen Nadel
Diane Newbury
Clarissa Pugh
Kris Qualls
Paul Redman
Tilghman Rouse
Joe Schiavo
Anna Shipp
Don Slater
Julie Slavet
Eric Tamulonis
Thinh Thach
Bill Thomas

Sharon Turner
Rachel Valletta
Susan Wachter
Amanda Wagner
Roland Wall
Noelle Warford
Katy Moss Warner
Cathy Weiss
Susan Weissman
Anne Wilmerding
Beverly Woods

PHS Staff:

Jeff Barg
Leigh Ann Campbell
Jenny Rose Carey
Tammy Leigh Dement
Dana Dentice
Janet Evans
Jacqueline Fisher
Guina Hammond
Sam Keith
Lauren Medsker
Zach Popkin
Justin Trezza

Contributors

PHS is grateful to the following individuals and organizations for their generous gifts and pledges received between July 1, 2018, and June 30, 2019. Many thanks to all supporters, friends, and volunteers who make the work of PHS possible.

\$250,000+

City of Philadelphia –
Division of Housing &
Community Development
Nancy Frederick &
William H. Frederick, Jr.*
Estate of Edward R. O'Braitis
Pennsylvania Department of
Environmental Protection
Philadelphia Water Department
Subaru of America, Inc.

\$100,000 - \$249,999

Anonymous
Aetna
Bank of America
Bartlett Tree Experts
City of Philadelphia –
Department of Parks
& Recreation
City of Philadelphia –
Department of Prisons
The Leslie Miller & Richard
Worley Foundation
National Fair Housing Alliance
PECO
The William Penn Foundation
Robin M. Potter &
Dr. Peter G. Gould
Rockefeller Philanthropy
Advisors
Wexford Science & Technology

\$50,000 - \$99,999

Aqua Pennsylvania
Belgard
Carolyn & Joseph Evans
Green Mountain Energy
Lisa D. Kabnick &
John H. McFadden
Main Line Health System
Malfer Foundation
The McLean Contributionship
Penn Treaty Special
Services District
Philadelphia Works
Leo & Peggy Pierce
Family Foundation
Estate of David A. Stevens
United Healthcare
United States Department
of Agriculture
Xfinity

\$25,000 - \$49,999

AARP
Accenture LLP
ACME
Arbor Day Foundation
Georgina M. Bissell
Laura & William C. Buck
Democratic National
Committee
Hartley Botanic

Ketel One Botanical
Larking Hill Foundation
Margaret McCarvill &
Steve Amadio
Morgan Lewis
The Panaphil Foundation
Pew Center for Arts
& Heritage
PNC Wealth Management
Margaret M. Sadler
STIHL
TD Bank
Teresa & Ken Wood

\$10,000 - \$24,999

Anonymous (3)
Andersen Windows
Janet & Jim Averill
Mr. & Mrs. Robert A.
Bartlett, Jr.
Bath Saver, Inc.
Bennett Family Foundation
Joann & Gene Bissell
Jean G. Bodine
Mr. & Mrs. Bruce M. Brown
Camden County
Municipal Authority
Jenny Rose & Gus Carey
Chanticleer Foundation
The CHG Charitable Trust
CHOP

Comcast
The Connelly Foundation
Cruise Planners
Cutco
Julia & David Fleischner
Lisa M. Gemmill
Global Home Incorporated
Laura & Jack Gregg
Janet F. Haas &
John Otto Haas
Martha Hamilton Morris &
I. Wistar Morris 3rd
The HBE Foundation
Homespire Windows
and Doors
Dr. Helen M. & Mr. John
F. Horstmann
The Jersey Cape
KIND Snacks
LeafFilter Gutters
Jeanette Lerman-Neubauer
& Joe Neubauer
Ann & Charles N. Marshall
Merck Family Fund
Barbara & Howard Meyers
Mid-Atlantic Waterproofing
Leo Model Foundation
The New Jersey Shore
New York's Best Experiences
Outside Unlimited Snow
Removal, LLC



The William Penn Foundation
Special Gifts Program
Pennsylvania Department
of Conservation &
Natural Resources

Jane G. Pepper
The Philadelphia Foundation
Philadelphia Phillies
Powerhome Remodeling
Radnor Financial
Advisors, LLC
Estate of Helen A. Reed
Science Center
Solo Real Estate
Snave Foundation
The Spionkop Charitable Trust
Stella Artois
Stradley Ronon, LLP
Regina & Frank M.
Thomas, Jr.
United Way of Greater
Philadelphia & Southern
New Jersey
Valley Forge Tourism &
Convention Board
Verizon Fios
A. Morris Williams, Jr.
Constance & Sankey Williams
Willis Towers Watson
Anne & Charlie Wilmerding
Diana & William* Wister

\$5,000 - \$9,999

Anonymous (3)
6abc/WPVI-TV
Carolyn R. Aller
AON Benfield
Aramark
AQUA
Ballard Spahr LLP

Bloktoberfest, Inc.
Buchanan Ingersoll & Rooney
Elia Durr Buck & Caroline
B. Rogers
CIC Philadelphia
Sarah M. Coulson
Mr. & Mrs. Edward
M. D'Alba
Jacki & Jim Delaney
Eastern State Penitentiary
Historic Site
Mr. & Mrs. Robert C. Fell
Julia & Art Fisher
Robert T. Foley
Linda Ann Galante, Esq.
& John J. Colussi
Hamilton Family
Charitable Trust
Mr. & Mrs. Thomas
D. Hays 3rd
Christine & George Henisee
Mr.* & Mrs. Roger S. Hillas
Thomas M. Hyndman, Jr.
Independence Foundation
KPMG
Peggy Kremenz
Longwood Gardens, Inc.
Jane C. MacElree
Family Foundation
Tracy & Pascal Maeter
Karen & Handsel Minyard
Molly & Robert Morrison
Cecelia & Steve Mostardi
One Tree Planted
Pennsylvania
Convention Center
Philadelphia Committee of the
Garden Club of America
Mr. & Mrs. J. Barton Riley
Ruth & Sidney Rosenblatt

Saul Ewing Arnstein &
Lehr LLP
The Lawrence Saunders Fund
Scholler Foundation
Alan P. Slack
Glenna G. Stewart
Stewart Family Foundation
Elizabeth Van Vleck
Visit Pennsylvania
Mr. & Mrs. Thomas
D. Watkins

\$2,500 - \$4,999

Anonymous (4)
The 1830 Family Foundation
John Alchin & Hal Marryatt
Carol Ashton-Hergenhan &
Bob Hergenhan
Kelly & Brent Asplundh
Mary Lee Asplundh
Sharon & Bill Avery
Harold Baxter Foundation
Laura & Roy Blanchard
Blaine Bonham, Jr. &
Richard Spitzborg
Breakthru Beverage LLC
Lloyd & Thatcher Brown
Cherry Blossoms Landscaping
Amy & R. Putnam Coes III
Amy & Michael Cohen
Scott Conking &
Thomas Wall
Dr. & Mrs. Larry W. Davis
Edith R. Dixon
Dolfinger-McMahon Foundation
Deb & John Donaldson
Sharon & Francis Ferrari
Donald F. Fox &
Allison B. Vulgamore

Linda M. Gardner &
Thomas J. Doll
Elizabeth H. Gemmill
Gessler Construction
Sue & Hank Harrison
Joan K. Harvey
Hannah L. Henderson
Jessie B. Hill
Louise & Harry Hill
Lynne & Harold Honickman
I. Gail Howard
Huntingdon Valley
Garden Club
IBEW Local 98
Annabelle Jellinek
Kaiserman Company
Laurel Valley Farms, Inc.
LCG Associates
Robin Lerner &
James Jolinger
Maxine S. Lewis
The Christian R. & Mary F.
Lindback Foundation
Sarah & Ted Lodge
Laurie & Samuel Marshall
Judith V. McGruther &
Mark A. Kerschner
Loraine & Kevin Melich
Martha & Peter Morse
Mostardi Nursery
Agnes Mulroney
Diane Newbury
& Steven Berman
Marie & David Parrish
Susan & Bob Peck
Pennsylvania Lumbermens
Mutual Insurance
Company
Christina & Christian Peters
Philadelphia Eagles

PIDC/The Navy Yard
 Matthew Rader &
 Michael Smith
 Ann & Frank Reed
 Melissa & Hank Reichner
 Republic Bank
 Joan & Tim Riddle
 Pat & Scott Sanders
 Bonnie & Peter Schorsch
 Patricia L. Smith, Esq. &
 Elbert Sampson
 June & Henry B.
 du Pont Smith
 Mr. & Mrs. John J. Soroko
 Sidney & Stewart Spahr
 Mr. & Mrs. James
 Bennett Straw
 Mr. & Mrs. Fairman
 R. Thompson
 Nancy Townsend
 Kathy Tracy, DVM
 Urban Engineers, Inc.
 Dr. Ann F. Van Sant
 Visit Philadelphia
 Margaret & Robert Wallis
 Susan & Peter Wilmerding

\$1,000 - \$2,499

Anonymous
 1919 Investment Counsel
 Cynthia & Pierce Archer
 Ann & Joe Armstrong
 Barbara & Theodore Aronson
 Director's Grant Program of the
 Barra Foundation, Inc.
 Martha & Alexis Barron
 Bartlett Tree Experts
 Elyse & Max Berger
 Charlotte C. Betancourt
 Jane & Jack Blandy
 Julie Blank
 Elizabeth Block
 Mr. & Mrs. Edward T. Borer

Brandywine Global Investment
 Management, LLC
 Naomi & Stephen Breman
 Laura L.T. Bullitt
 Andrew Bunting
 Valerie & William Burgess
 Nancie & Ted Burkett
 Mr. & Mrs. John
 E. Burrows, Jr.
 Susan & R. Kent Cadwalader
 Patricia A. S. Carson
 Susan W. Catherwood &
 Cummins Catherwood, Jr.
 Cedar Park Neighbors
 Marci & Ian Comisky
 Herbert D. Condie, Jr.
 Family Foundation
 Albert J. Coralluzzo
 Linda C. Corson
 The Nathan Cummings
 Foundation
 Mr. & Mrs. Ted B. Daeschler
 Walter D'Alessio
 Maude De Schauensee
 Amy & Tony D'Orazio
 Middy Dorrance &
 Tim Boylan
 Mr. & Mrs. Donald F. Duclow
 Margo Perry Eremus
 Barbara & David Erskine
 David F. Ertz
 Johannah Fine
 Mr. & Mrs. Walter Fisher, Jr.
 Nanie & Jay Flaherty
 Wendy & Walter Foulke
 The Franklin Institute
 Deborah M. Fretz
 Lisa Galante, M.D. & Thomas
 DeBerardinis, M.D.
 Estella F. Gano
 Lisa & Steve Gansz
 William Goldman Foundation

Greater Philadelphia
 Chamber of Commerce
 David Green & Joan Lagan
 Sandra S. & Thomas
 Greenwood, Jr.
 Michael Hardy &
 Barry Grossbach
 Susan & Robert Harries
 Mr. & Mrs. Pierre
 DuPont Hayward
 Jane & Paul Heintz
 Heidi & Rich Hesselein
 Lynn & Tony Hitschler
 Lauralee Howley
 Ann Dupuis Hozack
 Ann & Steve Hutton
 Eleanor Ingersoll
 Peter Irwin
 J. Downend Landscaping
 Jennifer & Todd Jarden
 Barbara Y. Juda
 Nicole Juday Rhoads &
 Sam Rhoads
 Mr. & Mrs. Charles Kahn, Jr.
 Susan & Geoffrey Kahn
 Barbara & Jerry Kaplan
 Anne & Morris Kellett
 Mary & John Kiely
 Katherine & Dean Kinsey
 Nancy & Richard Klavans
 Sallie & Berton Korman
 Karen Jean Kovich &
 Nicholas J. Kovich
 KPMG LLP
 Estate of Marion A. Kreiter
 Pete Kroeger
 Mr. & Mrs. Charles B. Landreth
 Todd Richard Lane
 Larsson & Scheuritzel P.C.
 Matthew Law
 LCG Associates
 Suzanne Levin
 Joanna McNeil Lewis

Liberty Business Strategies
 Liddy & John Lindsay
 Carol & David MacGregor
 Joan W. Mackie
 Deborah Mahon
 Malkenson Foundation Inc.
 Norman S. Marcus
 Susan Mattioni-Hill &
 Frederick C. Sieber III
 Catharine E. Maxey
 Dennis C. McGlade, FASLA
 Colleen Melchiorre
 Anne G. Miller
 Marianne T. Miller
 The Miralie Fund
 Cathy Moss
 The John & Shirley
 Nash Foundation
 Emily Nicholson
 Dr.* & Mrs. Bruce E. Northrup
 PACSCL
 Estate of Elizabeth A. Parisano
 Jane Pecsvaradi
 Donald Pell
 Pennsylvania Environmental
 Council
 Mr. & Mrs. R. Anderson Pew
 Jean H. & Seymour
 S. Preston 3rd
 Mr. & Mrs. Alfred W. Putnam, Jr.
 Kristine & Spencer Qualls
 Queen Village Neighbors
 Judith Ramirez
 Eva Ray & Suresh C. Ghosh
 Joann & Andrew Reinsel
 The Rittenhouse Foundation
 Donna Roberts
 J. Paul Rochford
 Debra L. Rodgers &
 Paul W. Meyer
 Dora L. & Robert
 G. Rogers, Jr.

Rotary International
 District 7450 Inc.
 Kathryn & Dale Russell
 Janine S. Scaff 
 Mr. & Mrs. Scott Schumacker 
 The Schuylkill Navy
 of Philadelphia
 Patty & Stephen Segal 
 Mr. & Mrs. John
 A. H. Shober 
 Shot Tower Estates
 Homeowner Association
 Stephen Shreiner 
 Tina & Don Slater
 Society Hill Civic Association
 Paula & Mark Solomon
 Sharee & Jeffrey Solow 
 Spring Garden Civic Assoc. Inc.
 Jean & Eugene Stark
 Lisa Stephano & Rick Ames 
 Joly Walton Stewart 
 Timothy Stiles
 Mary Jo & Francis
 R. Strawbridge
 Jan M. Supco 
 Barbara & Fred Sutherland 
 Bill Thomas
 Barbara & Robert Tiffany 
 Dr. & Mrs. Joseph
 B. Townsend 3rd
 Caroline C.C. Tyler
 UC Green
 Melissa & Jason Vermillion 
 Lisa M. Witomski &
 James A. Scott 
 Mr. & Mrs. Clarence Z. Wurts 
 Barbara & Bob Young 
 Stephanie Zarus 

\$500 - \$999

Anonymous (3)
 3901 Henry LLC
 AT Chadwick

Carole Abercauph
 Allyns Creek Garden Club
 Sallie Anderson & Evan Ernest
 Michael A. Archer
 Valerie Arkoosh &
 Jeffrey Harbison
 Valerie & Michael Armstead
 Gwen & Edward Asplundh
 Atta Boy Management Inc.
 Construction & Project
 Management
 Gay & William Austin
 Nancy & Bill Bain
 Lisa & Brian Bamberger
 John P. Bambrick
 Beverly Barnwell
 Carole & John Bartholdson
 Joseph Battaglini
 Mrs. Joseph T. Beardwood 3rd
 Catherine Beath
 Jaime & Aaron Belitsky
 Esther Bernard
 Suzanne & Rob Betts
 Lisa Binner
 Fred Bissinger
 Ingrid Bogen
 Eve S. Bogle
 Susan Bolesta
 Natalie Bolinski
 Robert Brant
 David R. Brigham, Ph.D.
 Susan Buehler
 Ronald Byrne
 Ann & Jay H. Calvert, Jr.
 Jim Camp & John Thompson
 Mr. & Mrs. Ross L. Campbell
 Brian Chadwick-Robinson
 Drs. Maryalice Cheney &
 Scott Goldman
 Lynann & Richard Cimino
 Clementine Montessori School
 Mary Cohen

Priscilla Cohen
 Community Foundation of
 Collier County/Green
 Heron Fund
 Patricia Cooper
 Amy Coughlin
 Mark Cowell
 Jennifer & David Cuning
 Susan & Anthony Cunningham
 Patricia M. Danzon
 Eleanor & Hal Davis
 Janis Derrow
 Sally DeWees
 Dilworth Paxson LLP
 Dr. & Mrs. William
 V. Dorwart, Jr.
 Mark Duckett & Stanley Gaddy
 Sara Duling & Sandor Ferenczy
 Kathleen Duncan
 Dr. & Mrs. William L. Elkins
 Gita Estersohn &
 Bobby Sapovits
 Margaret Evans
 Tuten Foundation
 Mr. & Mrs. Peter A. Evans
 eXude Benefits Group, Inc.
 Charlotte T. Feldman
 Sari Feldman
 David B. Fellin
 Arthur F. Ferguson
 John Ferry
 William I. Forbes 3rd
 Four Counties Garden Club
 Patricia Freeland &
 Robert Platten
 Gardeners Connect
 Kay & Jim Gately
 Bill Gehrman & Chris Mullins
 Giant Food Stores, Inc.
 Brett Glowacki
 Kevin S. Gorman
 Mr. & Mrs. Ralph M. Gotshall
 Julia & Patrick Green

Grete & Martyn Greenacre
 Nancy & Bob Greenwood
 Marybeth Guerrieri
 Prema & Anuj Gupta
 H&L Fund c/o Vanguard
 Charitable Endowment
 Karen & Thomas Haas
 Cheryl Hanau, M.D. &
 Kathleen Ryan, M.D.
 Nancy & Herbert Hargroves
 Lawrie R. Harris
 Sonya Harris
 Joan H. Harrison
 Monika Hemmers
 Wendy Hibberd
 Erich Hickey
 Diane Hillyard
 Anne & David Hilton
 Natalie & Ralph Hirshorn
 Mr. & Mrs. Martin J. Hoban
 Alan G. Hoden
 Bryan Hoffman
 Gail A. Hoffman
 Heidi & James Hole
 James Horn
 Jayne Hornung
 Michele Howard
 Mr. & Mrs. Dick Hughey
 Sharon Humble
 Eleanor* & L. Stockton Illoway
 Elizabeth Ireland
 Donald Irwin
 Alexander Jablovok
 Pamela J. Jensen
 Kym Johnson
 Gloria Johnston
 Alfred Jones
 Barbara & Les Kaplan
 Lynn & Howie Kay
 Grace Bradley Kelly
 Marjorie Epps Kennedy
 Mr. & Mrs. Robert W. Kennedy

Diane Kingsley Gronendahl
 Donald Klotz, Jr.
 Chris & Beth Knauer
 George F. Koch, Jr. &
 Santo A. DiDonato
 Helen R. Kohler
 Lynne Kosobucki
 Neal W. Krouse
 Brenda & Frank Lamanna
 Arlene Langman
 Molly & Ken Lawrence
 Eleanor P. Lloyd
 Molly Love & Adrian Castelli
 Jane Luce
 Constance Macolino
 Quyen Mark
 John Marsden
 Sarah Marshall
 Virginia R. Martin &
 Robert L. Comis
 Janine A. Matsko
 Dr. & Mrs. David
 Murray McCarthy
 Lisa Ann McCormick
 Quincy & David McCoy
 Peter McFarland
 Dorothy & John Meggitt
 Karen Melnick
 Men's Garden Club
 of Philadelphia
 Diane S. Miller
 Michael Mison
 Laura & Kenneth Mitchell
 Edward A. Montgomery, Jr.
 Lori Moran
 Lauren Morel
 Ruth Moyer
 Mr. & Mrs. Mousa F. Natan
 Natural Lands
 Eloise Naylor
 Barbara Oldenhoff
 Patricia J. Owens

Maureen Pelta, M.D. &
 Alan Feldman, Esq.
 Carol Perovich
 Nancy Phillips
 Caroline P. Pollard
 Mr. & Mrs. David E. Prewitt
 Brian Quigley
 Lea & John T. Reynolds
 Theodore R. Robb
 Karen & Chuck Root
 Barry & Betsy Rorer
 Ira L. Rosen
 The Frederic Royston Trust
 Wendy Mahoney Russell
 Prithvi Sankar
 Dr. & Mrs. John S. Schmader
 Liz Schumacher
 Lynnae Schwartz
 Susan & William Schwartz
 Frank Seidman
 Marcia Shearer
 Carol Shields
 Happy & Sam Shipley
 Cecilia Smith
 Patsy Smith
 South Philly Green
 South Street West
 Business Association
 Marilyn & Bill Sprague
 Phyllis Stickney
 Sarah Sweeney-Denham
 Anne Symonds
 Eric Tamulonis
 Richard W. Thatcher, Jr.
 Joan Tice
 The Honorable Pat Toomey &
 Kris Toomey
 Margaret Tuten
 Asha Varma &
 Vinod S. Agarwala
 Bernice Vogel
 Michelle Walter

Prema Wargo
 Mollie & Warwick S. Wheeler
 Anna Whitesell
 Penelope P. Wilson
 Wendy E. Wilson
 Sinclair Winton
 David Wojcik & Family
 Tom Woodward
 Catherine A. Worrall
 Minturn Wright
 Ralph Yanora
 Christine Young
 Terry S. Zane
 The Zoological Society
 of Philadelphia

\$250 - \$499

Anonymous (9)
 Glen Abrams & Joseph Buches
 John Ackerson
 Donald Addison
 Karen Aguilar & John Fox
 George J. Ahern
 Jane & Abass Alavi
 Vivian A. Alderfer
 Carolyn E. Allen
 Peter & Gabrielle Allen
 Gretchen Andersen
 Kathryn & Marvin Andersen
 Jeanne Anderson
 Lauren Anderson
 Zachary Andrus
 Edward F. Anewalt 4th
 Frances Angelucci
 Richard F. Ardin
 Thomas Ardinger
 Judith & Yair Argon
 Mary Arndtsen
 Heather & Michael Ascher
 Stephen Ash
 Frank W. Ashmore
 Norma Asnes

Felice Au
 Susie Auten
 E. Avellino
 Mark Bachmann
 Holly Badali
 Deana Baglantzis
 Michael Baker
 Elaine & Lauren Balaity
 Diane Barber-Roberts &
 Jeff Roberts
 Christine Barendsfeld
 Yoko Barnes
 Margaret Barney
 Dolores & Jerry Barrosse
 Jane Barth
 John Bartlett
 Karen O. Bauer
 Ellen Baxter & Robert Kavash
 Monita Baxter
 Judith Beck
 Joan B. Bedell
 Patricia & Thomas Bee
 Abby Bender
 Carole Bennett
 Mary-Jane Bension
 Patrice Berenato
 Tempa Berish
 Jane Elks Berkowitz
 Joni Berner & Edwin Hemwall
 Jane & George Bingham
 Andrea Biondo &
 Ken Hartzell, Jr.
 Robert Birnbaum
 Jan Birsch
 Suellen & Larry Blackwood
 David Blaisdell
 Ann Bloom
 Susan & Charlie Bloom
 Nancy & Alston Blount
 Charles R. Boccio
 Veronica Bogacz
 Chris Boldt

Cherry & Hans Bombeck
 Katharine Boneburg
 Mr. & Mrs. A. Stewart Booher
 Florence Borda
 Marcia & James Borel
 Frances Bourne &
 William E. Hoffner
 Peggy & Nat Bowditch
 Jonathan Bowen
 Mary Pat & Thomas Boyle
 BP Landscaping
 Bruce Braverman
 Samuel Brewer
 Will Sears Bricker
 Debbie G. Brodsky
 Anne Broker
 Hope Brolis
 Laurie Brooks
 Kimberly & James Brown
 Mr. & Mrs. Lenard Brown
 Nancy Brown
 Peggy W. Brown
 Sharon B. Brown
 Victoria & Peter Brown
 Galanda Bryan
 Lisa Budnick
 Theresa Buggey
 The Bullock Garden Project, Inc.
 Linda & Joseph Burke
 Dean Burley &
 John Underwood
 Elizabeth R. Burnard
 Margaret Burns
 Ellen Burr
 Natasha Butts
 Richard S. Calabrese
 Lynn & William Callaway
 Madelyn & Stephen Caltabiano
 Vance Camisa
 Leah Campagna
 Mary F. Campagnolo &
 Robert St. Clair

Janet Campbell
 Lois Campbell
 Andrew Capaldo
 Elizabeth Capella
 William B. Carey
 Cynthia S. Carolan
 Deb Carson & Trish Pritz
 Stuart Cary
 Christine & Alan Casper
 Mary Ellen T. Cassidy
 Kathy Caswell
 Albert T. Chadwick
 Doris M. Chamberlain
 Wendy Chamberlain
 Katherine & Thomas Chapin
 Rita Chatary
 Ernestine Cherry
 Marsha A. Chislo-Lakowski
 Lucy Chou
 Monica & Dennis Christensen
 Cathy Christi
 Roseann & Douglas Christian
 Betty Cianfichi
 Joseph Ciecko
 Jennifer Clarke & Alan Barstow
 Robert Clarke, M.D.
 Mr. & Mrs. John M. Clayton, Jr.
 Cynthia Clough
 Suzanne & Norman Cohn
 Ellis C. Coleman
 Carol & Rick Collier
 Rosemary & Charlie Cona
 Sheila Connelly
 Russell Consentino
 Michael Conway
 Maxine & David Cook
 Julianna & John Cooper
 Pamela Cooper
 Amy L. Cornelius
 Barbara C. Cornish
 George C. Corson, Jr.

Martha A. Costello &
 Robert Dineen
 Nicholas Coviello
 Denise Cowie & Stuart Ditzen
 Anne Marie Coyle
 Pamela Craig
 Mr. & Mrs. Alan Crawford 3rd
 Kaye L. Crown
 Ann T. Csink & John E. Linck
 Carol Fern Culhane
 Lori Cummines-Huck
 Alyce Cunningham
 Meg D'Alessandro
 Judith Daly
 Michael Danziger
 Irene Daws
 Rose Day
 Sondra De Antonio
 Mr. & Mrs. David de Forest Keys
 Brenda DeAngelis
 Cathy & Richard Decker
 Ellen Delea, M.D. &
 John Williams, M.D.
 Thomas J. Deluca
 Mr. & Mrs. Edmund J. DeLussey
 Michael Derrig
 Fran Dever
 Romulo L. Diaz, Jr.
 Jill M. Dietterich
 Pam DiFilippo
 Tammy & John C. Dodds
 Ann R. & Eugene Donski
 Marie Donnelly
 Carolyn S. Dorph
 Dr. & Mrs. Steven Douglas
 Daniela Dowd
 Eugenia Drobit &
 James Blair, Jr.
 Elizabeth Drum &
 Marc Dinardo
 Elizabeth S. Drummond
 Marlene & Len Dubin

Katie Dubow
 Victoria Dubrow
 Clarice Duckworth
 Heidi Duffey
 Dennis Duffy
 Janice & Vince Dugan
 Lorraine Durkin & Lewis Rigler
 Kevin Dwyer
 Nancy Dyer
 Suzan Eaton
 Maria & Amir Ecker
 Lynda M. Eckes
 Mr. & Mrs. George
 W. Edwards 3rd
 Sue Edwards
 Nancy R. Egan
 Dianne & David Elderkin
 Mary Emrich
 Janet & Paul Engstrom
 Cassandra & Frederic Epting
 Elisa & Nicolas Esposito
 Gay Estes
 Janet Evans & James
 B. Corrigan, Jr.
 Rodney Evans
 Sandra Evans
 William Ewing
 Elizabeth Fahmy
 Marie Failey
 Stephen Falchek
 Veronica Fallon-McNaught
 Patrice Fanning
 Sara & Olaf Farestad
 Rebecca Fay
 Roberta & Melvyn Fechner
 Karen Federici
 Stella Feinberg
 Stephen Fellman
 Sharyl & Eric Fidoten
 Daniele Figliuolo
 John Filippi
 Lois & Kenneth Fischbeck

David Fischer
 Jane E. Fischetti
 Joan & Aron Fisher
 Bobette & Robert Fisk
 Rebecca Flemer
 Lisa Fleming
 Alyce & Gene Fluder
 Anne & David Ford
 Joyce & Gary Fox
 Susan & Ken Frank
 Gail Freeman-Szal
 Pamela French & Lynn Kratz
 Pamela & Peter Freyd
 Sally & John Fridy
 Margaretha C. &
 Charles A. Fritz 3rd
 Marie Fritz
 Andrea Froehle
 Alberta Fuller
 William Gaboda
 Rachel L. Gaffey
 Cynthia A. Gale
 The Garden Club of Princeton
 Mary Gardner
 Jan M. Gartland
 John Garvey
 Donna R. Gehlhaart
 Steven Gilbert
 Kim Gilchrist
 Audrey & Bryan Gillespie
 Lee & Douglas Gittens
 L.A. Glasgow
 John H. Glick, M.D.
 Diane & George Goeke
 Jane & Joe Goldblum
 Emily F. Goldson
 Paul J. Gontarek
 Tom Goodwin
 Janet H. & Robert A. Goren
 Gary Gosztanyi
 Blanche Gottel

Peggy Goutmann
 Robert Graeff
 Mr. & Mrs. Richard Graf
 Mr. & Mrs. Charles D. Graham
 Gretchen & George Graham
 Deborah Mostardi Gray
 Joyce Gray &
 Micheal Flanagan
 Thomas A. Green
 Ann Greene
 Barbara Greenhalgh-Weidman
 Teresa & Jerry Greiner
 Mary Anne & Robert Grenfell
 Ruth & Edward Griner
 Catherine & Merrill Gross
 Lisbeth & Robert Grossman
 Terri Grossman
 Christina Grot
 William Grubb
 Louis Guernsey
 Stephen Guinup
 Joseph Gunsiorowski
 Meredith Haab
 Ann Hagerty Perry
 Marya Halderman
 Susan W. Hanover
 Diana Hare
 Josephine Harmon-Williams
 James Harper
 Sara Harris
 Nancy Lee Hart
 Linda Hartnett
 Elisabeth Hasslacher
 Rachel Hauck-Oldham
 Christina Hausner
 Bonita Hay
 Jeanne Hayden
 Lori M. Hayes
 Sarah Hayes
 Robert Haynes
 Carol C. Healey

Kristy Hedberg
 Cynthia & John Hedin
 Thomas E. Helfst
 Cathleen Henry
 Heidi Hepner
 Adena Herskovitz
 Caryn & Gordon Hetherston
 Monte Hetland &
 Steve Toporoff
 Krystyna & Charlie Hibbert
 John Hidell
 Jim Higgins
 Lucy & David Hill
 Mary S. & Stephen A. Hinds
 Sharon Hirsh
 Madeline Hoefer
 Elizabeth Hopkins
 Harry Hoplamazian
 Doris & Gary Horn
 Joanne & Al Horn
 Christine Hough
 John T. Hovatter
 Mr. & Mrs. Robert M. Howard
 Olivia Hrynko
 Gayle Hughes
 Lauren Hughes
 Lesley A. Hughes
 Susannah T. Hunter
 Shirley Husten
 David Huting
 Danielle & Christine Hutjer
 Rosie & Lee Hymerling
 Raymond Jablow
 Sheila James & Juliet Raeburn
 Mrs. Keith S. Jennings
 Jacqueline Jerko
 Linda Jobst
 Alice N. Johnson
 Geraldine Johnson
 Elaine Johnston
 Louise R. Johnston

Lu & Andy Johnston
 Sean Jones
 Susan & David Jones
 Madeleine Joulle & R. Prange
 Robert Jubelirer
 Christine & Walter Jump
 Janet & Paul H. Kahn
 Amanda Kaiserman
 Mr. & Mrs. C. Erik Karlsson, Jr.
 Catharine K. Keim
 Cecy Keller
 Stephen Kelley
 Kevin Kelly
 Steven & Rhena Kelsen
 Nancy & Zebulon Kendrick
 Noelle & Robert Kennedy
 Barbara Kessler
 Raymond Kijowski
 Eunice & David King
 John M. King
 Nicole Kingsley
 Mr. & Mrs. David M. Kipphut
 Jamie Kirschenstein
 Julie Kiselica
 Gabrielle K. Kissling
 Jeanne-Marie & Charles Kita
 Geoffrey Kitson
 Robert Klach
 Janet & Lewis Klein
 Terri Klein
 Mr. & Mrs. Robert J. Kleinberg
 Judith A. Kleiner
 Jennifer Kluge
 Ellen S. Knight
 Beverley & John Kolb
 Cherie Kollmer
 Robin Konschak
 Mary Jane & Louis Kopakowski
 Richard D. Kostic
 Stanley Kovak
 Stephanie Kozak

Larry Kraft	Robert Locke	Natalie McGinley	Mr. & Mrs. Earl M. Morgan
Diane Krasne	Sharon Lohse	Leo J. McGuigan 3rd	Frederick L. Morlok
Elizabeth Krick Heckman	Linda G. London	Jan McIntosh	Jacqueline Morrill
Maureen Kucinich	Melissa Long	Kelley McKee	Mr. & Mrs. George N. Morris
Alison Kuhn	Mary & John Lord	Mr. & Mrs. Joseph	Maureen & Andrew Morrison
Barbara E. Kukielka	Sue & Paul Lotke	J. McKenna, Jr.	Caroline Morrow
Diane M. Kummings	William A. Lotz	Timothy McKenna	Paul R. Moul
Janet Kuna	Ann Lovitt & Andrew Czulewicz	Mr. & Mrs. William	Valerie A. Moul
David Kutzik	Linda & George Lowe	A. McKenna	Patricia Mowen
Christine Kwik	Karla Ludwig	Elizabeth Ray McLean	Joan Mowery
Sheila Labrecque	Gregory MacDuff	Patricia McMichael Sweeney	John Moyer
Larry Lambright	Stephen Maciejewski	& Eugene Sweeney	Susan Mucciarone
Judy & Tony Lame	Trish Mackay	Ruth McMorro	Amanda B. Muckle
Betty Lampe	Sally & Tod MacKenzie	Donald McPhail	Barbara Mueller
Molly Lang	Diana Mackie	Jeanette McVeigh	Kathleen & William Mulroy
Emilie & Peter Lapham	James Jay Mackie &	Maura Meaney	Anne M. & Gary Murphy
Craig Larrain	Monica Oss	Mary Jane Meconi	Christina H. Murphy
Nancy Laskowski	Hillary & Robert Magnanini	Daniel Meersman	Larry Musetti
Frederick LaValley &	Carol A. Maher	Nora Meixner	Sharon A. Musher & Daniel
John Whitenight	Ellen Maitin & David Behar	Martha Mel & Hank Edmunds	M. Eisenstadt
Louise & James Lawter	Lucy S. Malone	Patricia L. Menig	Mr. & Mrs. Richard Myers
Orsolya Lazar	Jane N. Mangrum	Karen & William Mestichelli	Louisa Mygatt
Louise T. Lee	Joseph Manko, Esq.	Alan Metcalfe	Martha Nakamura
Wynn Lee	Margaret A. &	Miriam & Robert Meulmeester	Susan & Robert Natalini
Julia B. Leisenring	Andrew H. Mann, Jr.	Daphne & William Miklovic	Danna & Andrew Nehrbas
Jane R. Lemmon	Mary Mann	Ellen Milgrim	Jim Nelson & David Tavani
Lauren Lenfest	Tiffany Mann	Emanuela Miller & Avi Eden	Mr. & Mrs. Lathrop
Stephen Leonard	Caroline Manogue	Madeline E. Miller	B. Nelson, Jr.
Margie Leone	Helen Marcarelli	Linda E. Mills	Mr.* & Mrs. John
Lynn Lesko	Julian Maressa	Pam & Robert Mills	J. Nesbitt 3rd
Gregory Leveille	Barbara & Tom Margerum	Karen Mitchell	Sharon & Bruce Nicholls
Adam Levine & Tom Borkowski	Mr. & Mrs. Graham A. Marx	Cinda & Robert Modee	Helen & Chris Nicholson
Theresa K. Levine	Linda A. Matrunich &	Rachel Mohrmann	Shirley Nicolai
Carol Lewis White	Patrick Grannan	Mr. & Mrs. H. Laddie	Shahid Nigro
John Lewis, Jr.	Dan T. Mayo	Montague, Jr.	Mark F. Nolte
Polly Lewis	Patricia A. Mc Cann	Thomas Mooney	Nancy & Victor Nordberg
Vera Leykina	Carol McConomy	Mr. & Mrs. J. Thomas Moore	Mrs. Samuel P. Norton
Connor Liddic	Elizabeth G. McCutcheon	Mr. & Mrs. James O. Moore	Kelly Novak
Joan M. Lind	Michelle & Chris McDonald	Mary E. Moore	Mary Pat Nugent
Jeffrey Lipman	Priscilla McDonald	Page S. Morahan, Ph.D.	Kathryn & John O'Brien
Cynthia J. Little, Ph.D.	Katie McGeady	Richard Moran	Betty O'Connor
	Dagmar E. McGill	Jennifer Morehouse	Stephen O'Toole

Octoraro Native Plant Nursery	Alison Price	Jayne M. Ross	Mrs. Edward Sickles
Patricia B. Oldfield	Sarah & Phil Price	Sarah Roth	Laura & Ronald Siena
John Oleksa	Jamie Prince	Suzanne Roth & George Graham	Jennifer Silvestrov-Guarini
Terry & Ed Opall	Gusta A. Pritchett	Christine Y. Rother	Mrs. William Simon
Julianne & Andrew Ortega	Mary Pugh	Carey V. Rowan	Robin Simonson
Stephanie J. Oscarson	Joan & Francis Purcell	Dr. & Mrs. Joseph W. Ruane	Tom Simpson
Christine Ottow	Joanne & Richard Purcell	David Rubin	Dorothy I. Sims
Susan Padilla	Robert Quinn	Eric Rubin	Mr. & Mrs. Stephen Siwiecki
Constance Palmer-Summerville	Janet Raines	Thomas P. Rumaker	Maureen D. & William R. Skowronek
Mr. & Mrs. Ralph M. Papa	Ann & Richard Ranck	Susan Ruskowski	Amy Slater & Mark Silow
Dee Parker	Reshma Rangwala	Nicole Russo	Dorothy Sloan
Carol Parks	Corrina Rapp	Jillian J. Ryan	Mary Smeekens
Kathleen & John Parry	Jane Rath	Aleksandr Sachkov	Alicia Smith
Michael Patton	Lawrence A. Real, M.D.	Janet Sala	Janet E. Smith
Mary B. Paul	Pamela & Karl Reichelt	Priscilla & Donald Samuelson	Jessie L. Smith
Deborah Payson	Judy Reichner	Emil Saroch, Jr.	Jonne K. & Corey R. Smith
Mary Alice Peeling & John Pachkowski	Marilyn L. Reininger	David Satterthwaite	Pauline F. Smoyer
Roz Pendergast	Lois & Jerry Renthal	Gina Savini	Fay & John Snyder
Pennsylvania Bonsai Society	Carolyn Ressa	Gena & Jim Scanlan	Karan G. Snyder
Barbara Perin	Marianne Rhoads	Anthony Scarpignato	Mimi & Howard Snyder
Anthony Perno	Mr. & Mrs. Herbert S. Riband, Jr.	Christine Schafer	John J. Soeffing, Jr.
Tish Perosio	Mr. & Mrs. John H. Rice, Jr.	Bonnie & Kirk Schmitt, Ph.D.	Solar Innovations, Inc.
Elaine Petrossian & Ted Rauch	Kimberly Richards	Karen P. Schrader	Julia H. Solmssen
Patricia F. Petrovic	Dr. & Mrs. Irwin Richman	Matthew Schreck	Rhonda & Richard Soricelli
Boyd Petterson	Linda Richter	Allyson & David Schwartz	Michael Sparks
Robert A. Pfenning	Jessica Rights	Constance & Rick Schwein	Trisha Spector
John Phanos	Lisa Roberts & David W. Seltzer	Theresa B. & Peter M. Schwolsky	Wanda James Speight
Mary Anna A. Phillips	Patricia Roberts	Ellen Scott	Harvey Spencer
M. Liz Piazza	Mr. & Mrs. George Keith Robertshaw	Evelyn P. Scott	Patricia Spera
Sara Piddington	Mrs. Norman P. Robinson	Mary Ellen Scott	Linda & Lawrence Spivack
Judy Pierce	Maria Rocco	Paula D. & Stan Segal	Louisa Spottswood
Gary Pilc	Michael Rock	Self Help Movement Inc.	Spring Valley Nurseries
Nicholas Pirolo	Regina Rodack	Janet Sellers	Dean H. Springman
Lenore Plotkin	Fred S. Rodgers	Georgia & Hass Shafia	Tiffany Springman
Janet Point	Mary Rogers	Joe Shapiro	Robin & John Spurlino
Elin Poneman	Eudora K. Roseman	Alice M. Sharp	Frederick Steiner
Carl R. Popadick	Jodi Roseman	Karen & Bob Sharrar	Judith Stewart
Kathryn & Raymond Porutski	Judy & John Rosensteel	Kathleen Sheridan	Robert E. Stewart
Wayne C. Povey	Sue & Hal Rosenthal	Theresa Y. Sherwin	Lawrence L. Stier
Candace Preston	Allyson Ross	Jill Shimek	William Stillwell

Candace & John Stoudt
 Strata Company
 Ron Strouse
 Paula Stuart
 Yan Su
 Clarisse Sulyok
 Loavel R. Summerville
 Richard Switlik
 Christopher J. Sytsma
 Renee M. Talley
 Dennis Talty
 Kelly Tannen
 Maureen Tate &
 Gerald McHugh
 MaryAnn Tatum
 Lorraine D. Taylor
 Lynne & Thomas Taylor
 Fred Tehrani
 Elizabeth TenHave
 Lloyd & Lamonte Tepper
 Nancy Terramin
 Marleen & David Thomas
 W. David Thompson
 Eugenia Timmer
 Nancy L. Tindall
 Pilar & James Tischler
 Linda & Matthew Todorow
 Clarena Tolson
 Vicky Tomlin
 Jennifer Torpie
 Elissa Torre
 Andrea Tracey
 James Trainer, Ph.D.
 Arnella Trent
 Peter Trentacoste
 David Trevaskis
 Amanda Troy
 Joseph A. Turchi, Jr.
 Linda Tus
 Twin Valleys Garden Club
 Suzanne & Rick Ullrich
 Hope Ulrich

Sandra Urbaniak
 Frank Urso
 Michelle Valentino
 Helene van Beuren
 Mr. & Mrs. Christopher
 Van de Velde
 Joan Van der Veen
 Judy Van Tijn
 Christina M. VanWyk
 Vivian Vega &
 Christopher Brown
 Elizabeth & Ralph
 Vondemhagen
 Marijean & Dale Wade
 Tammie Waggy
 Helen S. Wagner
 Carolyn & William B. Waldron
 Elizabeth Walker
 Margaret Walker
 Shirley J. Walker
 Kathleen Walsh
 Marian Walters
 Martha Walton
 Geraldine Wang
 Carol J. Ward
 Victoria M. Ward
 Clifford E. Warfield
 Elizabeth Warsaw
 Helen A. Waskiewicz
 Dr. & Mrs. Joel E. Wasley
 Helen S. Weary
 Nancy & Donald Weaver
 Weekend Guides of the PMA
 Lorna Weir
 Frank Welch
 Melissa Wells
 John Wert
 Earl Wester
 Susi & John Westergard
 Margaret Westermaier
 Stephanie Wheaton
 Renata & Linton A. Whitaker

Jocelyn White
 Robert White
 Rosemary White
 Marna C. Whittington
 Dr. & Mrs. John Widenmeyer
 Patricia Wigfield
 Mrs. Robert W. Wigton, Jr.
 Mr. & Mrs. G. Thomas Wiley
 Mit Wiley
 Harold A. Wilkinson
 Wendy A. Willard
 Charles Reese Williams
 Karen Wilson
 Lloyd Winans
 Carol & John Winkler
 Will Wister
 Mr. & Mrs. Walter Witoshkin
 Frances Witte
 Margaret H. Wolcott
 Barbara M. Wolf
 Nancy Wolf Sussman
 David Wolfsdorf
 Helen Wong & Janet Wong
 Diana & George Woodward
 Dana Wormer &
 Theodore Schurr
 Peggy & John Woynicz
 Jenny Wright
 Joanne P. Wright
 Lida A. Wright
 Robert Wright
 Laurie & Edward Yamasaki
 Patricia Yearick
 Patricia Yelicanin
 Mr. & Mrs. Michael Young
 Youngscape, Inc.
 Deborah Zarnow
 Dorothy Zelesko
 Kathleen E. Zimmerman
 Sandra Zoeller
 David & Sandy Zopf

In-Kind Gifts

6abc/WPVI-TV
 Dotty Brown
 Laura & Jack Gregg
 Tsognie & Douglas Hamilton
 Ketel One Vodka / Diageo
 North America, Inc.
 Andrea Labe
 Laurel Valley Farms, Inc.
 Loews Philadelphia Hotel
 Dennis C. McGlade, FASLA
 Elizabeth P. McLean
 Ken Nimblett
 Jane G. Pepper
 Rona Satten
 Diana & William* Wister

🌱 1827 Society members

* Deceased

Please note: PHS makes every effort to ensure the accuracy of this list. If you notice an error or omission, please contact the PHS Development Office at 215.988.1622.

© 2019 Pennsylvania Horticultural Society



Thank you for joining us in Gardening for the Greater Good!

Below and Facing Page: PHS staff volunteered at Share Food Program of Philadelphia as part of Values Day.







PENNSYLVANIA HORTICULTURAL SOCIETY

100 N. 20th Street - 5th Floor • Philadelphia, PA 19103-1495

p: 215.988.8800 • PHSonline.org

*This Page: 2019 PHS
Philadelphia Flower Show.*